

**DIOCESE OF KUMBO  
SOCIAL WELFARE SERVICES/CARITAS  
KUMBO**

OPEN NATIONAL INVITATION TO TENDER

N<sup>o</sup>:

**DK/SWD/CHCB/SJBPC/RMB/RHCB/R2B/2024**

\*\*\*\*\*

FOR

**THE REHABILITATION OF CATHOLIC HEALTH  
CENTRE BINSHUA AND REHABILITATION OF  
PART OF TWO ACCOMODATING FACILITIES  
AT ST JEROME BIBLICAL AND PASTORAL  
CENTRE KUMBO, BOTH IN THE DIOCESE OF  
KUMBO, CAMEROON**

\*\*\*\*\*

FUNDING: DIOCESE OF KUMBO

\*\*\*\*\*

# TENDER DOCUMENTS

\*\*\*\*\*

## CONTENTS

| <b>No.</b> | <b>DESCRIPTION</b>                          | <b>Page</b> |
|------------|---|-------------|
| Doc 1      | TENDER NOTICE                               | 3           |
| Doc 2      | THE SPECIAL TENDER REGULATIONS              | 7           |
| Doc 3      | THE GENERAL ADMINISTRATIVE CLAUSES (GAC)    | 14          |
| Doc 4      | THE TECHNICAL SPECIFICATIONS                | 19          |
| Doc 5      | BILL OF QUANTITIES AND COST ESTIMATES (BQ). | 38          |
| Doc 6      | MODEL FORMS.                                | 45          |
| Doc 8      | EXECUTION PLANS                             | 49          |

Document N° 1: **TENDER NOTICE**

\*\*\*\*\*

# **TENDER NOTICE**

## **A) SUBJECT OF THE INVITATION TO TENDER:**

Within the framework of the rehabilitation of infrastructure in the Diocese of Kumbo, the Social Welfare department/CARITAS Kumbo here represented by The Coordinator, CARITAS Kumbo and on behalf of His Lordship, the Bishop of Kumbo, Legal Holder of all Projects within the Diocese of Kumbo; through the Diocesan Social Welfare/Caritas department hereby launches a National Invitation to tender for the rehabilitation of Catholic Health Centre (CHC) Binshua in Donga Mantung Division and rehabilitation of two accommodating facilities of St. Jerome Biblical and Pastoral Centre in Kumbo, Bui Division in the Diocese of Kumbo, North West Region, Republic of Cameroon.

## **B) PARTICIPATION:**

Participation in this present invitation to tender is open to experienced and duly registered qualified contractors and NGOs of the Republic of Cameroon, who are familiar with the geographical territory of Bui and Donga-Mantung Divisions and who have been working in the area since 2015; with the necessary financial capability, technical and professional expertise in public works and construction and with commendable experience in community Development.

## **C) FINANCING:**

The said works shall be financed by the Diocese of Kumbo and through the Social Welfare/Caritas department of the Diocese of Kumbo for the realisation of the above referenced works.

## **D) CONSULTATION AND ACQUISITION OF FILES:**

The file may be consulted during working hours at the CARITAS Secretariat, Bishop's house, Kumbo, contact; 679884778, the Social Welfare/Caritas Kumbo branch office in the Archdiocese of Bamenda located at Down Beach Hostels, Big Mankon, 653524358.

## **E) SUBMISSION OF BIDS:**

Each bid drafted in English or French shall be submitted in four (04) copies indicating one (01) original and three (03) copies labelled as such on them and shall be submitted at any of the above-mentioned offices on or before **Friday, August 30, 2024 at 10:00 am prompt. Bids deposited after 10:00 am shall not be accepted.**

The outer envelope shall bear the following inscriptions:

### **OPEN NATIONAL INVITATION TO TENDER**

N<sup>o</sup>: **DK/SWD/CHCB/SJBPC/RMB/RHCB/R2B/2024**

**FOR**

**THE REHABILITATION OF CATHOLIC HEALTH CENTER BINSHUA AND  
ACCOMMODATING FACILITIES OF PASTORAL CENTRE KUMBO, IN THE  
DIOCESE OF KUMBO**

**(TO BE OPENED ONLY DURING THE BIDS OPENING SESSION).**

**F) ADMINISTRATIVE DOCUMENTS:**

All administrative documents attached to bids should either be originals or certified true copies by competent services in charge and not more than three (03) months old.

**G) CONFORMITY CRITERIA:**

Tender conformity shall be evaluated as per the following:

A) **Eliminatory Criteria.**

- ✓ Absence or non-compliance of one of the administrative file documents.
- ✓ Forged documents in the administrative/technical/financial files.
- ✓ Certified true copies of documents more than three (03) months old.
- ✓ Bidders not having experience in Community Development.
- ✓ Bidders who are not familiar with the terrain and or who (because of the ongoing war) have not been working in the area since 2015

B) **Evaluation Criteria.**

The preliminary evaluation shall be binary and based on the following essential criteria:

- ✓ Compliance with technical specifications of the tender file.
- ✓ Bidder's experience with similar works.
- ✓ Methodological approach and relevance of proposed solutions.
- ✓ Qualification, experience and skills of key personnel relevant to the works, Work planning and schedule.
- ✓ Equipment and tools vital for the execution of the works.
- ✓ Field presence

Any offer that shall not respect two third (2/3) i.e. (70%) of the above criteria shall simply be eliminated.

**H) OPENING OF BIDS:**

The bids shall be opened *in a single* phase and shall take place at the CARITAS Kumbo Conference Hall, Bishop's House Kumbo **on Friday 30 August 2024 at 12:00noon prompt** local time in the presence of bidders or their representatives who have full knowledge about the bids submitted.

**I) DURATION FOR EXECUTION OF WORKS:**

The maximum duration for the execution of works shall be seven (05 and a half weeks) calendar months and as from the date of notification of Service Order to start works.

**J) ADDENDUM:**

The Contracting Authority (Coordinator, CARITAS Kumbo) and in consultation with the donor community and legal holder; reserves the right to carry out any necessary modifications to this invitation to tender.

**K) COMPLEMENTARY INFORMATION:**

For any other information, bidders are advised to contact the Coordinator or the Administrative Secretary Social Welfare/CARITAS Kumbo. The office is situated on the left as you drive in to the Hill of the Immaculate Conception; Bishop's House Kumbo, during working hours (contacts, Tel :679884778/675376381)

**THE COORDINATOR,  
Social Welfare/CARITAS KUMBO  
BISHOP'S HOUSE KUMBO  
PO BOX 115**

**CC;**

- Donga Mantung Community Radio
- Radio Evangelium
- National luncheon Date Program CRTV

Document N<sup>o</sup>: 2:  
**SPECIAL TENDER REGULATIONS**  
\*\*\*\*\*

## **II SPECIAL TENDER REGULATIONS**

### **A) INTRODUCTION**

#### **ARTICLE 1: SOURCE OF FUNDING**

- 1.1 The project shall be financed through the Social Welfare/Caritas Kumbo by the Diocese of Kumbo.
- 1.2 This present open national invitation to tender has as subject.  
**"THE REHABILITATION OF CATHOLIC HEALTH CENTRE BINSHUA AND REHABILITATION OF TWO ACCOMODATING FACILITIES IN ST JEROME'S BIBLICAL AND PASTORAL CENTRE KUMBO BOTH IN THE DIOCESE OF KUMBO, CAMEROON"**
- 1.2 The Coordinator, CARITAS Kumbo and representative of the Legal Holder as program Manager is the Contracting Authority.
- 1.3 All documents submitted by the bidder in any capacity, following this open national invitation to tender, must be established exclusively:
  - In English or French,
  - Using the metric system for quantities,
  - Expressing all costs prices in Francs CFA currency,
- 1.4 Bidders shall remain bound by their bids for a period of ninety (90) days from date of opening of the bids

#### **ARTICLE 2: OBLIGATIONS AND CONDITIONS TO TENDER**

- 2.1 Any bid that does not respect any of the conditions for tendering shall not be received.
- 2.2 The bidders shall submit four (04) copies with one (01) original and three (03) copies (indicated on them as such) of his/her bids drafted in English or French at the CARITAS Kumbo Secretariat, Bishop's house, Kumbo, or the Social Welfare/Caritas Kumbo branch office in the Archdiocese of Bamenda located at Down Beach Hostels, Big Mankon, on or before the 06/08/2024 at 11:00am prompt. No bid shall be received after this time and date.
- 2.3 After submission no bids shall be withdrawn, modified or corrected for any reason.  
This condition shall apply before, during and after the submission date.

#### **ARTICLE 3: THE BIDDING DOCUMENTS**

- 3.1 The documents that make up this tender are as follows:
  - Document N<sup>o</sup>: 1: Invitation to Tender.
  - Document N<sup>o</sup>: 2: The Special Tender Regulation
  - Document N<sup>o</sup>: 3: The Special Administrative Conditions (SAC)
  - Document N<sup>o</sup>: 4: Technical Specifications (TS)
  - Document N<sup>o</sup>: 5: Form for Bill of Quantities and Costs Estimates (BQCE)
  - Document N<sup>o</sup>: 6: Model Forms
    - Declaration of the intention to Tender Form
    - Tender Form
    - Bank Guarantee Forms (Guarantee retentions)
  - Document N<sup>o</sup>: 9: Building Plans



#### **ARTICLE 4: AMENDMENT OF BIDDING DOCUMENTS**

- 4.1 At any time prior to the deadline for submission of bids, The Social Welfare/CARITAS Kumbo may modify the bidding documents for any reasons, whether at its own initiative or in response to a clarification requested by a prospective bidder.
- 4.2 All prospective bidders that have received the bidding documents will be notified of all amendments in writing (email), or be contacted by telephone to do so and all such modifications will be considered as an integral part of their bidding documents.
- 4.3 In order to allow prospective bidders reasonable time to take the amendment into account in preparing their bids, The Social Welfare/CARITAS Kumbo at its discretion, may extend the deadline for the submission of bids if there were any such amendments.

#### **ARTICLE 5: PRESENTATION OF BIDS**

##### 5.1 Signature of bids – Power of Attorney

5.1.1 All the signatures and initials needed for the tender and indicated in this article must be those of the bidder himself or his/her representative duly mandated.

5.1.2 If the bidder is a group or enterprises, each group member or representative must sign the bidding documents such that the result shall be a joint offer.

The group shall choose a common representative who shall receive Service Orders and carry out all transactions in the name of the group.

##### **5.2 Presentation of bids**

The bid shall be presented in four (04) copies (one (01) original and three (03) copies) marked as such and put inside a sealed envelope comprising the following:

#### **ADMINISTRATIVE DOCUMENTS**

The bid submitted by the bidder shall comprise the following:

- A1. The declaration to tender (in the format enclosed in the annex of these regulations) signed and stamped by the bidder or group representative
- A2 A registration certificate of the NGO or Certificate of incorporation for Business entities
- A3 An attestation of a bank account in the name of the enterprise.
- A4 A certified copy of current Business Licence.
- A5 A certified copy of Tax payer's card
- A6 An Attestation from the NSIF
- A7 A proof of nationality of bidder (certified true copy of N.I.D card of General Manager or Coordinator).
- A8 Certificate of non-exclusion from the Public Contracts Regulatory Board (ARMP).
- A9 The bid security of 1,000,000Fr from a bank accredited by MINFI and recognised by COBAC (Bank caution)

A10 Attestation of site visit and recognition of site, signed by the concerned. (Leader of each of these institutions).

**N.B:** Absence of any of the documents shall result to outright rejection. All bids not in conformity with the models shall be simply rejected.

**N.B:** All documents shall be originals as requested or certified true copies legalised by competent services or that which issued them and must not be more than three (03) months old.

The documents shall be arranged in the order listed above and separated from each other by colour separators

***Any document with double certification shall not be accepted.***

### **TECHNICAL OFFER**

It shall contain the documents cited and placed in the following order:

| <b>No</b> | <b>DOCUMENT</b>                      | <b>OPERATION REQUESTED</b>   | <b>AUTHENTICATION</b>  |
|-----------|--------------------------------------|--|--|
| B1        | <b>Equipment list</b>                | It shall show clearly the means at the disposal of the enterprise to carry out the job (list of equipment and tools)   | None.  |
| B2        | <b>Personnel list</b>                | It shall contain:<br><ul style="list-style-type: none"> <li>☞ <b>Works Supervisor:</b> At least a Civil Engineering technician with at least 5 years' experience in the field of construction</li> <li>☞ <b>Foreman:</b> a holder of at least CAP or Equivalent certificate in building construction with at least 5 years' experience in the domain of Construction.</li> </ul> | Attach for each person a CV signed and dated, as well as certified copies of current certificates. |
| B3        | <b>Organisation of works</b>         | In conformity with article 7 below, it shall show clearly the organisation of the enterprise (methodology of execution, work schedule, site installation, supply of materials, etc)  | Date, signature and stamp of bidder at the end of document.  |
| B4        | <b>Sub-contracting</b>               | The Social Welfare/CARITAS Kumbo, doesn't accept and allow for sub-contracting.  |  |
| B5        | <b>Attestation of site visit</b>     | Attestation of visit to the site where the works are to be carried out.  | Dated and signed by the concerned  |
| B6        | <b>References of the enterprise.</b> | List of similar jobs executed in the last three (03) years by the enterprise and or other civil engineering works realised.  | None   |
| B7        | <b>Technical</b>                     | Provided in tender file.   | Initialized on every   |

|  |                       |  |   |
|--|-----------------------|--|---|
|  | <b>specifications</b> |  | page, Signed and stamped on the last page |
|--|-----------------------|--|---|

## **FINANCIAL OFFER**

| <b>No</b> | <b>DOCUMENT</b>                              | <b>OPERATION REQUESTED</b>                         | <b>AUTHENTICATION</b>   |
|-----------|--|--|---|
| C1        | <b>The tender</b>                            | Format to be completed and tender amount inserted. | Signature, date and stamp of bidder.                              |
| C2        | <b>Bill of Quantities and Cost Estimates</b> | Format to be completed.                            | Initials on each page, signature on last page, all pages stamped. |

All these documents are to be arranged in the above order and separated with colour separators.

### **5.3 SUBMISSION OF OFFERS AND OPENING OF BIDS**

Envelope to be sealed and marked "ADMINISTRATIVE DOCUMENTS, TECHNICAL OFFER and FINANCIAL OFFER" as the case may be.

The envelope shall be sealed and shall carry the following inscriptions:

#### **OPEN NATIONAL INVITATION TO TENDER**

N<sup>o</sup>: **DK/SWD/CHCB/SJBPC/RMB/RHCB/R2B/2024**

**FOR**

**THE REHABILITATION OF CATHOLIC HEALTH CENTER BINSHUA AND TWO ACCOMODATING BLOCKS OF ST. JEROME'S BIBLICAL AND PASTORAL CENTRE KUMBO, IN THE DIOCESE OF KUMBO**

**(TO BE OPENED ONLY DURING THE BIDS OPENING SESSION).**

All bids shall be deposited at The Social Welfare/CARITAS Kumbo office or the Social Welfare/Caritas Kumbo branch office in the Archdiocese of Bamenda located at Down Beach Hostels, Big Mankon on or before 30/08/2024 at 10:00 am prompt.

In the case where the envelope shall not be sealed or without the inscription on it, The Social Welfare/CARITAS KUMBO shall decline all responsibility for misdirection or premature opening. Any bid opened prematurely shall be rejected and returned to the bidder.

#### **ARTICLE 6: TECHNICAL PROPOSALS**

Proposals for different variants can be accepted from the bidder but the bidder has the obligation of costing the variant in the tender file.

#### **ARTICLE 7: TENDER**

Each bidder shall tender following the conditions laid down in this tender file.

## **ARTICLE 8: CURRENCY**

The unit prices shall be calculated in Francs CFA, and furnished in figures and words without taxes. The currency that shall be used for payment shall be the FCFA.

## **ARTICLE 9: PAYMENT MODALITIES**

The contractor shall be paid upon presentation of a Detailed Request of Funds for a particular task, visa to Pay by the Coordinator, Social Welfare/ CARITAS Kumbo and submitted through the office accountant to the Kumbo Diocesan Finance Secretary. The contractor shall only be paid through the contractor's organizational bank account.

## **ARTICLE 10: VERIFICATION OF BIDS**

10.1 The Social Welfare/CARITAS Kumbo has a period of one week to examine the bids and make its decision.

10.2. At the request of the selection committee, the bidder shall furnish in writing, within seven (07) calendar days, any information necessary for the examination of his bid or concerning errors and omissions noted.

10.3. The Selection Committee reserve the right to summon the bidder at his expenditure for complementary explanations. Any errors discovered by the Selection Committee shall be rectified as follows:

10.3.1. Where there exists a difference between the amount in figures and the amount in letters, the verified and calculated amount in figures shall be taken as correct;

10.3.2. Where there exists a difference between a unit price and the amount obtained by the product of unit price and the quantity, the unit price shall be taken, except the tender board estimates that it is an error of decimal point, in which case the amount is taken and the unit price corrected.

## **ARTICLE 11: VALIDITY OF BIDS**

The bidder shall be bound by his bid for a period of ninety (90) days from the day of submission of bids.

If at the end of this period the Jobbing Order is not notified to the bidder, he can withdraw his bid or accept the extension of duration on the written request of the administration.

## **ARTICLE 12: OPENING/EVALUATION OF BIDS AND CHOICE OF CONTRACTOR:**

The opening of bids shall take place on the date and place prescribed in the tender file. Envelopes received from prospective bidders shall be opened at once and evaluated in two stages.

### **i. OPENING OF ENVELOPE.**

**(Administrative documents)** shall be opened in the presence of the bidders and the conformity of the documents verified. The administrative documents must be complete, valid and authentic. Only bids with documents that meet these requirements shall have their other conditions evaluated.

**(Technical Offer)** shall be opened in the presence of the bidders to determine whether the file is complete with the authenticity of documents checked and whether the documents are legalised by the competent services concerned and placed in the recommended order.

**(Financial Offer)** shall be carried out only for bids that have sailed through the first two steps.

Bids amounts shall be read out in public as inscribed in the financial offer of the bidder.

### **12.1: Evaluation of Financial Offer:**

Careful study shall be carried out on the details of prices, unit prices, the bill of quantities and cost estimates presented to make sure the bidder did study the prices and has not made an arithmetic error to arrive at his final contract amount. The prices on the PES shall have priority over those of the BQCE and PE. They shall serve as the bases of calculation of the bidding amount.

The eventual calculation errors shall be corrected after Analysis and the amount altered, if necessary, without any complaints from the bidder.

Any neglect noticed at the study of prices and volumes of works shall lead to the disqualification of the bid.

### **12.2 CHOICE OF CONTRACTOR (CRITERIA OF AWARDED CONTRACT):**

The contract shall be awarded to the meritorious and lowest best bidder. Careful and comparative study must be carried out on the details of prices, unit prices, the bill of quantities and cost estimates presented to make sure the bidder did study the prices and has not made an arithmetic error to arrive at his final contract amount.

### **ARTICLE 13: PROCEDURE OF AWARD OF CONTRACT**

13.1 The results from this tender shall be prepared, awarded and executed according to the Social Welfare/CARITAS KUMBO and donor procedures.

13.2 The winner shall be notified through his official address in at most one week from the date of bid opening. He shall in five (05) days fulfil the formalities related to the awards, especially to submit two (2) copies (one original and one photocopy) of the proposed contract that he/she has completed and signed, to the office of the Contracting Authority for final signature.

13.3 In the case where the enterprise does not fulfil these conditions, his choice shall simply be annulled without further notice and the next contender shall be called in for replacement.

Once the Contracting Authority has signed the contract, the contractor shall be notified through the Administrative Secretary with immediate effect. He has three (03) days to contact the Authorising Officer through the Administrative Secretary for the beginning of execution of works following notification of the Service Order to start work by the project Engineer. Failure to respect the deadlines shall call for withdrawal and eventual cancellation of contract.

**THE COORDINATOR**  
**Social Welfare/CARITAS KUMBO**

Document N<sup>o</sup>. 3: **GENERAL ADMINISTRATIVE  
CLAUSES  
(Draft contract)**  
\*\*\*\*\*

## **PARTIES TO THE CONTRACT.**

### **CONTRACT OF AGREEMENT BETWEEN THE SOCIAL WELFARE/CARITAS DEPARTMENT OF THE DIOCESE OF KUMBO AND ..... FOR THE REHABILITATION OF CATHOLIC HEALTH CENTRE BINSHUA AND REHABILITATION OF TWO ACCOMODATING BLOCKS OF ST JEROME BIBLICAL AND PASTORAL CENTRE BOTH IN THE DIOCESE OF KUMBO**

The Social Welfare/Caritas department of the Diocese of Kumbo and the .... enter into an Execution Agreement dated \_\_\_\_\_ 2024 and based on award of contract after competitive bidding and bearing on **FOR THE REHABILITATION OF CATHOLIC HEALTH CENTRE BINSHUA AND REHABILITATION OF TWO ACCOMODATING BLOCKS OF ST JEROME BIBLICAL AND PASTORAL CENTRE BOTH IN THE DIOCESE OF KUMBO**

The main goal of the project is to improve access to basic services in the Diocese of Kumbo.

#### **1. SUBJECT OF THE CONTRACT**

The purpose of this contract is to clearly specify requirements and responsibilities of each party in specific regards to the *rehabilitation of Catholic Health Centre Binshua and rehabilitation of two Accommodating Blocks of St. Jerome biblical and pastoral centre both in the diocese of kumbo*

#### **2. GENERAL PROVISIONS**

- The contractor shall provide services according to the scope of work specified in the technical specifications.
- The contractor has evaluated and costed the scope of work and ensured that the services as defined in the scope of Work can be provided. In addition, the prices quoted by the contractor remain binding on him throughout the contract period.
- The Contractor will be subject to the Contract documents and the scope of work, will carry out and provide the services as outlined in Article 3.1 in a proper and conscientious manner, and to a good standard.
- It is assumed that the contractor, prior to signing the original contract has carried out adequate inspection of the situation on site and has clarified any queries with the Social Welfare/Caritas department of the Diocese of Kumbo to accept full responsibility for the services included in this Contract.
- Neither the contractor, nor the Social Welfare/Caritas department of the Diocese of Kumbo shall assign this Contract to other parties without the written consent of the other party. The contractor shall remain wholly responsible for carrying out and completing the Contract.

#### **3. COMMENCEMENT AND COMPLETION DATES.**

- The term of the Agreement which shall begin on 06<sup>th</sup> of September 2024 shall expire on the 22<sup>nd</sup> of February 2028. The term can be further extended only

by agreement of both the Social Welfare/Caritas department of the Diocese of Kumbo and the Contractor.

#### **4. PRICES OF CONTRACT**

- The Social Welfare/Caritas department of the Diocese of Kumbo shall through the Finance department of the Diocese of Kumbo pay the Contractor the fixed price in CFA stipulated at each stage of the construction phase of the execution of project inclusive of any tax liabilities and discounts, hereinafter called Price of Contract.

#### **5. TERMS OF PAYMENT**

- The price of Contract as specified in article 4.1 will be paid as follows
- Upon completion of a particular task, the contractor submits a request for payments corresponding to the task completed.
- The completed task will be evaluated by Caritas Kumbo, prior to approval for payment by the Coordinator
- Approval for payment duly signed by the coordinator of the Social Welfare/Caritas department being project manager
- Validation of request by issuance of check in the amount requested by the competent signatories of the account being His Lordship the Bishop of Kumbo and the Diocesan Finance Secretary
- All payments will be made via check issuance or bank transfer to the Contractor's organizational bank account.

#### **6. RIGHTS AND OBLIGATIONS OF THE SOCIAL WELFARE/CARITAS DEPARTMENT**

- Pay in a timely manner for the services provided under this contract according to the provisions under article 5 of this contract.
- The Social Welfare/Caritas department has the right during any time of the Contract's execution to be informed on and check the quality and the stage of the Contractor's obligations without disturbing the working process of the Contractor.

#### **7. RIGHTS AND OBLIGATIONS OF THE CONTRACTOR**

- Accomplish the tasks in a timely and efficient manner and as required by the Social Welfare/Caritas department of the Diocese of Kumbo
- At any stage of this contract, provide any information required by the Social Welfare/Caritas department and allow access to same to check the quality and stage of the Contractor's obligations.
- Keep strictly confidential and not discuss to any third party.
- The obligations and the performance of the contractor under this agreement shall not, except in case of "Force Majeur", be affected either by changes in climatic conditions or by market conditions or any other event whatsoever and the contractor hereby agrees that all considerations have been taken into account before signing this contract".

#### **8. PENALTIES AND DEDUCTIONS**



- If the Contractor fails to complete the work within the period of seven (five and a half months) months after the issuance of a service order to start work, the Social Welfare/Caritas department shall issue a Certificate of Non-completion, subject to which the Contractor shall pay or allow the Social Welfare/Caritas department to deduct liquidated damages at the amount of 5/1000 of the cost of the task pending per day of delay.
- If the delay period is up to 30days, the contract will be terminated.
- If the Contract is terminated due to the Contractor's faults, the Social Welfare/Caritas department has the right to impose the adequate penalty and/deductions on the Contractor. In that case, the penalty and/or deduction will be set according to the laws in Cameroon.

## **9. CONTRACT MODIFICATIONS**

- This Contract can be modified only with mutual consent where an amendment to the Contract will be signed, which will become an inseparable part of the Contract. The amendments will come into force from their date of signing.

## **10. STATUTORY OBLIGATIONS**

- The parties shall comply with any statutory instruments, rules or orders, or any local government regulations applicable to the contract.
- If any of the parties notices a divergence between the statutory laws and the contract, it should immediately notify in writing the other party about that divergence with a proposal for respective contract modifications.

## **11. TERMINATION**

- This contract will be terminated in the following cases:
- On specified date of completion of February 22 2025
- By mutual agreement of both parties.
- Either party, for its convenience can terminate this contract in whole or in part at any time prior to the date of completion of February 2025 by giving a written notice to the other within 5 working days in advance.
- The contractor suspends the carrying out of the obligations without a reasonable cause;
- The contractor fails to proceed regularly and diligently with provision of obligations as per contract;
- Evidence shows that the contractor is employing child labor to accomplish the contract.
- If evidence shows that the Contractor or any of his staff has gone against the Code of Conduct or the PSEA policy of Social Welfare/Caritas Kumbo which by signing this contract they shall commit to respect within the period of validity of this contract

## **12. COPY RIGHTS**

- The Social Welfare/Caritas department of the Diocese of Kumbo and the concerned village communities/organizations is the sole owner of the services rendered. Any copy, duplicate, or imitation requires the written pre-approval of the Social Welfare/Caritas department.

**13. SETTLEMENT OF DISPUTES AND ARBITRATION**

- Each party to this Contract shall notify the other in writing in case of any disagreement or differences.
- All disputes or disagreement that may arise between the Social Welfare/Caritas department and the Contractor during the execution of this Contract shall be resolved through negotiations.
- In case both parties cannot reach an agreement by means of negotiation, they have recourse to Cameroon courts or to a mutually agreed mediator.
- The applicable law for this Contract is the Cameroon law.

**14. RISK**

The Social Welfare/Caritas department of the Diocese of Kumbo is not liable for any injury affecting third parties during the implementation of this contract  
This amendment replaces the terms and agreement of the original contract  
IN WITNESS WHEREOF, the parties hereto have executed this Amendment as a sealed instrument, as of the date of signature below.

The Social Welfare/Caritas department of the Diocese of Kumbo

By: \_\_\_\_\_  
His Lordship, Bishop George NKUO (Legal Holder)  
Bishop of Kumbo

The Contractor

By \_\_\_\_\_

**Document N°. 4: TECHNICAL SPECIFICATIONS**

## **I.2- Subject**

These Terms of Reference constitute the Book of Technical Specifications for Rehabilitation Works clauses intended to recall the reference texts and regulations for each building trade as well as the qualities required for the various equipment and materials included in the scope of the rehabilitation works. The specific technical clauses and the descriptive estimate relating to the various trades with the location of the requirements give as complete a description as possible of the work to be performed, with the aim of enabling us to interpret the details, to specify the nature of the materials to be used and to determine the particularities of manufacture and implementation. These requirements cannot claim to be a complete and perfect description of the work and it should be noted that this description of the work is not limiting.

We must perform without exception or reservation all the work provided for in our contract and will therefore have included not only the work and supplies described in this document, but also those which could have escaped the details of the description and which are essential for the perfect completion of the works of restoration in good condition of the works of their trades, according to the submitted plans and the rules of the art of construction.

Likewise, the work provided for in the written and estimate documents of the contract, but which do not appear in the plans are due by us and included in the prices.

## **I.3 - Presentation of the operation**

This specification refers to the reconstruction process for the *Rehabilitation Of Catholic Health Centre Binshua and Rehabilitation Of two Accommodating Blocks Of St Jerome Biblical And Pastoral Centre Both In The Diocese Of Kumbo*

The project shall take into consideration the following:

### **REHABILITATION OF CATHOLIC HEALTH CENTRE BINSHUA**

#### **1. Rehabilitation of maternity block**

- REHABILITATION ON WALLS/MASONRY
- REPAIRS ON FRAMEWORK AND ROOF COVERING
- RE-PAINTING

#### **2. Re-Construction Of A Health Centre Block In Catholic Health Centre Binshua**

- PRELIMINARY WORKS
- EARTH WORKS

- FOUNDATION WALL ERECTION
- ELEVATION OF WALLS/MASONRY
- FRAMEWORK AND ROOF COVERING
- TILING /FLOOR FINISHING
- PAINTING
- JOINERY AND GLASSWORKS
- ELECTRICITY
- SANITARY PLUMBING

### **REHABILITATION AND EQUIPMENT OF ST JEROME'S PASTORAL CENTRE**

- SITE INSTALLATION AND PRELIMINARY WORKS
- REPAIRS AND REHABILITATIONS ON BLOCK ONE
- REPAIRS AND REHABILITATIONS ON BLOCK TWO
- EXTENSION OF ST ALOYSIUS WATER SUPPLY TO PASTORAL CENTRE
- REPAIRS ON CIRCULATION PATHS, DRAINAGE AND GENERAL LAYOUT

#### **I.4- Allotment**

The works covered by this standard specification refer to the Rehabilitation Of Catholic Health Centre Binshua And Rehabilitation Of Two Accommodating Blocks Of St Jerome Biblical And Pastoral Centre Both In The Diocese Of Kumbo

#### **I-5- Key personnel**

The Contractor carrying out the work must provide the names of personnel with the required qualifications as required on the following table:

| N°       | DESIGNATION  | EXISTENCE |     | OBSERVATIONS |
|----------|--|-----------|-----|--------------|
|          |  | NO        | YES |              |
|          | <b>List of Key Personnel</b>   |           |     |              |
| <b>A</b> | <b>Works supervisor :</b><br>Civil Engineering Works Engineer (CEWE)<br>or Senior Civil Engineering Technician (SCET). |           |     |              |

|          |   |  |  |  |
|----------|---|--|--|--|
| 1        | <p><b>a-</b> Certified copy of the Civil Engineering Works Engineer diploma.</p> <p><b>b-</b> Certified copy of the diploma of Higher Technician of Civil Engineering</p> |  |  |  |
| 2        | Certificate of availability dated and   |  |  |  |
| 3        | Dated and signed CV   |  |  |  |
| 4        | <p>General experience in Civil Engineering</p> <p><b>≥ 05 years</b></p>   |  |  |  |
| 5        | <p>Experience as a Construction Supervisor</p> <p><b>≥ 03 years</b></p>   |  |  |  |
| <b>B</b> | <b>Site manager:</b> Higher technician, Civil   |  |  |  |

|   |  |  |  |  |
|---|--|--|--|--|
|   | Engineering Technician or CAP in masonry                       |  |  |  |
| 1 | Certified copy of the diploma                                  |  |  |  |
| 2 | Certificate of availability signed and dated                   |  |  |  |
| 3 | Dated and signed CV  |  |  |  |
| 4 | General experience in Civil Engineering<br><b>≥ 07 years</b>   |  |  |  |
| 5 | Experience as a construction site manager<br><b>≥ 05 years</b> |  |  |  |
| 6 | General experience in management <b>≥ 03 years</b>             |  |  |  |

#### I-6- Material resources

The contractor must provide a list of available equipment to be used for works as in the table below

| N°       | DESIGNATION  | Q'ty | Carte Grise or Invoice/Rental Contract |     | OBSERVATIONS |
|----------|--|------|--|-----|--------------|
|          |  |      | NO                                     | YES |              |
| <b>A</b> | <b>Construction Equipment</b>  |      |  |     |              |
| 1        | Concrete mixer   |      |  |     |              |
| 2        | Wheel barrows  |      |  |     |              |
| 3        | Concrete vibrator  |      |  |     |              |
| 4        | Set of tools for masonry (Water level, Plumb bob, Trowel, Hammer, Chisel, Square, Mallet, 10 clamps or more, Mechanical bar, Round shovels, Shovels Spades, Pickaxes, Mason Buckets,... etc) |      |  |     |              |
| 5        | Tool set for painter (Wire brush, Roller, Brushes, etc.)   |      |  |     |              |
| 6        | Set of tools for woodworking (Handsaw, hammer, etc.)   |      |  |     |              |

### **I.7- Special conditions**

Considering the climatic conditions of the area, the materials must be effectively protected:

- Against rust.
- Against the effects of dust, debris and living micro-organisms.

### **I.8- Tests and Materials**

- All materials must be new, of the best quality and free from any defects capable of compromising the strength, appearance or duration of the works;
- We will be required, at the request of Social Welfare/CARITAS KUMBO to justify the origin of the materials, either by the presentation of invoices or by any other means;
- Test samples will be provided to Social Welfare/CARITAS KUMBO when necessary.
- The Social Welfare/CARITAS KUMBO and her partners will be free to monitor and permanently monitor, in the quarries and workshops, the strict execution of the specifications, with regard to the origin and quality of materials, the manufacture of materials, the making of parts, etc.
- The use of products/materials similar to those prescribed, will only be authorize by Social Welfare/CARITAS KUMBO if these products are judged to be of at least equal or superior quality performance.

### **I.9- Execution plans**

The various works will be carried out in accordance with the indications in the plans.

- Plan views ;
- Foundation plans ;
- Sections ;
- Detailed plans.
- Roofs
- Elevation views

Before any execution, we must verify the dimensions appearing on all the plans as well as the consistency between this document and the plans. We will always inform our donors in good time of any errors or omissions observed.

### **I.13- Inspection - Tests - Functional verification**

#### **I.13.1- Technical controls**

In order to prevent technical hazards arising from improper operation of the facilities, we may carry out the necessary tests and verifications based on the technical recommendations.



## **I.15- Site cleaning**

### **I.15.1- Ongoing Works**

Cleanliness of the job site and its surroundings should be ensured, throughout the duration of the work. The worksite team should be equipped with suitable cleaning equipment.

### **I.15.2- At the end of the works**

We shall carry out the final cleaning of the site. Cleaning will concern the following structures:

- Sanitary facilities (including accessories);
- Lightings
- The exterior joinery and woodwork.
- Floors
- Glazing and windows
- General land scaping.

## **I.16- Protection**

The company must protect the materials, installations, tools, and structures, from any damage that they could suffer, in particular due to bad weather.

It must repair the damage resulting from the lack of precaution, restore or replace at its own expense any constructions that have been damaged as a result.

If the work is interrupted for any reason whatsoever, the company must protect the constructions and works carried out against the damage they may suffer, at no additional cost to the Project Owner.

## **ORIGIN, QUALITY AND IMPLEMENTATION OF MATERIALS**

### **Chapter 1- Reference texts, reminder of the regulations**

The production of these works is subject to compliance with regulatory, technical and technological texts in Cameroon, as well as those published in France, Britain and in the European Union, made applicable in Cameroon.

The work will be calculated and carried out in accordance with the standards and regulations in force, in particular:

| <b>Trades</b>             | <b>Norms</b> |  |
|---------------------------|--------------|--|
| <b>Concrete and steel</b> | NF P15-301   | Hydraulic binders                      |
|                           | NF A35-027   | Steel products for reinforced concrete |
|                           | BS EN 12620  | Aggregates for concrete                |

|                    |               |  |
|--------------------|---------------|--|
| <b>Sanitation</b>  | DTU 64.1      | Non-collective sanitation devices for single-family dwellings            |
|                    | BS EN 752     | Drainage and sanitation networks outside the building                    |
| <b>Masonry</b>     | NF DTU 20.1   | Small-unit masonry structures  |
|                    | EN 1996-1-1   |  |
| <b>Plasters</b>    | DTU 26.1      | Mortar rendering work  |
| <b>Plumbing</b>    | DTU 60.11     | Rules for calculating sanitary plumbing installations and installations. |
| <b>Electricity</b> | NF P 80-201-2 | Electrical installations of residential buildings                        |

For architectural lots, the services will be performed according to the following standards:

| <b>Trades</b>           | <b>Norms</b>                 |   |
|-------------------------|------------------------------|---|
| <b>Ceiling</b>          | DTU 25.51                    | Implementation of plywood structures  |
| <b>Aluminum joinery</b> | NM 10.02.038                 | Aluminum profiles   |
|                         | NM 10.02.039                 | Anodizing of aluminum alloy profiles  |
|                         | NM 01.9.001 –<br>NM 01.9.007 | Relating to the anodization tests of aluminum alloy profiles                              |
|                         | NF P 24.101                  | Window terminology  |
|                         | NF P 24.301                  | Technical specifications of windows, doors and metal frames                               |
|                         | NF P 20.501                  | Air permeability test, water tightness and wind resistance, deformation of opening frames |
|                         | DTU 37.1                     | Pose de la menuiserie sur le gros œuvre   |
| <b>Glazing</b>          | DTU n°39                     | Glass glazing works   |
| <b>Painting</b>         | NF T 30.001                  | Terminology and miscellaneous defects   |
|                         | NF T 30.002                  | Classification of mineral pigments  |
|                         | NF T 30.003                  | Classification of the families of paints, varnishes and related products.                 |
|                         | NF T 30.015                  | Painting, abrasion resistance tests   |
|                         | NF T 31.001                  | Whites ground in linseed oil  |
|                         | NF T 32.001                  | Windows, glass, terminology   |
|                         | NF T 78 301                  | Window glass, quality   |

|  |             |                              |
|--|-------------|------------------------------|
|  | NF T 78.331 | Linseed oil mastic           |
|  | NF T 32.500 | Classification and thickness |
|  | NF T 78.401 | Window glass and dimensions  |

## **2.1- Mortar and concreting**

### **a). SAND**

All the sand to be used shall be free from acids, organic matter, animal or vegetable matter. The grain size shall be between 0/2.5mm for mortars and screed finish and between 0/5mm for structures in reinforced concrete. It shall be river sand, with a sand equivalent of not less than 85%.

### **b) GRAVELS**

All the gravel for concrete shall be continuously graded. This gravel shall be free from silt or other noxious elements by sieving or washing with clean water. The grade shall be 5/15 and 15/25. A grain size analysis test shall be done on all gravels to be used for concreting.

### **c) WATER**

Water used in mixing concrete and mortars or washing of aggregates shall be free from salt and other impurities.

### **d) CEMENT AND ADDITIVES.**

Cement used for concrete and mortars shall comply with the general conditions required by the rules in force. The cement to be used for this project should be **CPJ 35** types or similar types and shall not present any trace of humidity. To avoid humidity, cement should be well staked on a well-ventilated platform free from moisture. Cement should be free from lumps.

### **e) REINFORCEMENT**

Rods for reinforced concrete should be 'Rough' type "HA 400 or 500" and shall conform with the BAEL or BS specifications. These rods shall be quite clean and free from oil, rust or paint.

They should not be twisted or recovered from other usage. There shall be a strict respect of plan in terms of steel works.

### **f) FORMWORK**

Formwork for this exercise is the simple type. It shall be able to bear without noticeable deformations all the weight and pressure exerted on it by the concrete. It shall equally bear effects of concrete vibration and the weight of workers on it during concreting.

The formworks should be water tight to avoid loss of cement grout.

.

## **2.2- Timber for Framing**

All the woods will be of first quality, sound, perfectly dry, the humidity level in accordance with the requirements of the climate, without vicious knots, presenting no significant deterioration, such as spalling, frost, internal cracks or rolling ... etc. and guaranteed against all possible illnesses.

The wood should also not show traces of insects, the cracks will only affect the surface of the parts and will be few.

These woods will be chosen on the basis of their dimensional stability, their mechanical qualities and the possibilities of supply.

All wood will undergo an insecticide and fungicide treatment against termites by soaking before assembly.

## **2.3- Roofing sheets**

The roofing sheets will be of Tole Bac Aluminum 3.5/10th thick and will come from approved manufacturers and factories.

## **2.4- Electricity**

For proper illumination of the structure, electrification will be done. fluorescent lamps TLD 36w840 1,2m, with its control switches, installed at the suitable positions in the buildings. Sockets, circuit breakers, junction boxes, will be provided at appropriate locations. The entire circuit will be earthed. The 1.5mm<sup>2</sup> H07V-U1000 cable will be used on lighting lines meanwhile 2.5mm<sup>2</sup> H07V-U1000 cable will be used on sockets and other outlets. This activity will start on the same date with wall plastering; with conduct piping and will run for 4 working weeks, after which, installation of electrical fittings shall be done two days after painting.

## **2.5- Painting**

A priming coat of Lime Badugeon will be applied on the walls and ceiling of the buildings, to prepare the walls to receive the paints. Kelly Moore premium external paints will be used at the exterior surfaces of the buildings meanwhile Pantex 800 will be used internally. National oil paint, shall be used atleast 1.5m from the floor, all round the building both internally and externally for skirting. The painting colours shall be designed by the Social Welfare/CARITAS KUMBO

## **Methods of execution of building works**

### **3.1- Site visits**

The internal supervision of the Social Welfare/CARITAS KUMBO will always visit the site, to enable us to assess the consistency of the work, quality of materials and methods of construction applied on site.

### **3.2- Overview**

The works will be carried out including the following trades:

#### **REHABILITATION OF THE MARTENITY BLOCK IN CATHOLIC HEALTH CENTRE BINSHUA**

REHABILITATION ON WALLS/MASONRY

REPAIRS ON FRAMEWORK AND ROOF COVERING

RE-PAINTING

**RE-CONSTRUCTION OF A HEALTH CENTRE BLOCK IN CATHOLIC HEALTH CENTRE BINSHUA**

- PRELIMINARY WORKS
- EARTH WORKS
- FOUNDATION WALL ERECTION
- ELEVATION OF WALLS/MASONRY
- FRAMEWORK AND ROOF COVERING
- TILING /FLOOR FINISHING
- PAINTING
- JOINERY AND GLASSWORKS
- ELECTRICITY
- SANITARY PLUMBING

**REHABILITATION AND EQUIPMENT OF ST JEROME'S PASTORAL CENTRE**

- SITE INSTALLATION AND PRELIMINARY WORKS
- REPAIRS AND REHABILITATIONS ON BLOCK ONE
- REPAIRS AND REHABILITATIONS ON BLOCK TWO

**3.2.1- Composition of concrete and mortars**

**3.2.1.1- Concrete**

Concretes used for the construction of structures meeting the following specifications:

| Concrete Type          | Cement dosage per m <sup>3</sup> | Area in Need  | Resistance at 28 days<br>- compression<br>- Mini traction | Water /Cement ratio<br>maximum |
|------------------------|----------------------------------|---|---|--------------------------------|
| Common Concrete (CC)   | 200 kg                           | Lean concrete   |   | 0,70                           |
| Grade 1 Concrete (G1C) | 250 kg                           | Form concrete   | 18 Mpa<br>1,8 Mpa   | 0,60                           |
| Grade 2 Concrete (G2C) | 300 kg                           | For structural elements that are not reinforced or lightly reinforced | 23 Mpa<br>2,05 Mpa  | 0,55                           |

|                           |        |  |                    |      |
|---------------------------|--------|--|--------------------|------|
| Grade 3<br>Concrete (G3C) | 350 kg | For works or<br>parts of works<br>in reinforced<br>concrete              | 27 Mpa<br>2,32 Mpa | 0,55 |
| Grade 4<br>Concrete (G4C) | 400 kg | For structures<br>or parts of<br>structures in<br>reinforced<br>concrete | 30 Mpa<br>2,67 Mpa | 0,55 |

The dose of cement indicated in the table cannot be reduced even if the resistance of the tests exceeds the prescribed values.

**a)- Consistency**

The consistency of quality concretes G2C, G3C and G4C will be measured with the Abrams Cone Test Method (ACTM), the subsidence will be less than 5 cm.

**c)- Concrete control**

Concrete control will be done by internal control team when need be.

Concrete control will be carried out accordingly as prescribed in the table below:

| <b>Class of<br/>Concrete</b> | <b>Number<br/>of test pieces<br/>to collect</b>         | <b>Compression</b>                         | <b>Frequency of<br/>Traction tests</b>                                      | <b>Consistency<br/>Fresh<br/>concrete</b> |
|------------------------------|---|--|---|---|
| G2C<br>300 kg                | Per day of<br>concreting<br><br>4 cylinders             | 2 tests<br><br>at 7 days                   | 2 tests<br><br>at 7 days  | 1 per ½ days of<br>concreting             |
|                              | 8 prisms  | 4 tests<br><br>at 28 days                  | 4 tests<br><br>at 28 days   |   |
| G3C<br>350 kg                | Per day of<br>concreting<br><br>10 cylinders            | 3 tests at 3<br>days, 2 tests at<br>7 days | 3 tests at 3<br>days 2 tests at<br>7 days<br><br>1 per ½ days<br>concreting |   |
|                              | Prisms (at the<br>request of the<br>Project<br>Manager) | 5 tests at 7<br>days                       | 5 tests at 28<br>days   |   |
| G4C                          | Prisms (at the<br>request of the                        | 7 tests at 7                               | 7 tests at 28   |   |

|        |                  |      |      |  |
|--------|------------------|------|------|--|
| 400 kg | Project Manager) | days | days |  |
|--------|------------------|------|------|--|

If structures or parts of structures, for which the tests are carried out show resistance lower than 15%, the required resistances will be refused.

### **3.1.1.2- Mortars**

Depending on their destination, the mortars will have the following compositions:

- M400: Mortar with 400 kg of cement per cubic meter of sand. It will be used for the realization of the facings seen of the works (covers of manholes, works in superstructures);
- M500: Mortar at 500 kg of cement per cubic meter of sand with the addition of Sika N1 product according to the dosage prescribed by the manufacturer and subject to the approval of the Project Manager. This mortar will be used for the waterproof interior plaster of the structures ;
- M600: Mortar dosed at 600 kg of cement per cubic meter of sand. It will be used for all seals (metal profile descent rungs, etc.) and for repointing masonry.

### **3.3- Site installation**

This activity will include; installation of workers, materials, tools and equipment to be used on the site. Workers to be installed on the site will be given a day's training on the activities, safety measures and methods to be employed in the execution of this project. A site hut will also be constructed to host; materials/tools storage, site office and a changing compartment. Worker's security within the area of intervention will also be ensured, by reporting about the execution of the project to the appropriate authorities.

### **3.4- Preparatory works**

#### **3.4.2- Labour-based works**

The specificity of labour-based work is to fight against poverty by creating temporary jobs for local unskilled labour and the use of local materials in construction work. Unskilled labour must therefore be recruited for such tasks that do not need skill.

In the case of this labour-based construction site and to achieve one of the objectives which are the creation of temporary jobs in order to fight against poverty, the contractor shall employ the unskilled local labour of the site of the construction for the execution of the works: the following activities shall be done manually;

- excavations of all kinds.
- backfilling of excavations.
- participation as a labourer in the construction of major works;
- participation as a labourer in the realisation of finishes.

The transport of water, sand, rubble and gravel will be done only by means of wheelbarrows or rickshaws. The improvement of these local resources is the responsibility of the company. However, in cases where the distances are greater than two (02) kilometers, the company has the option of using motorized vehicles.

### **3.4.3- setting outs**

The installation of the structures will be carried out by the company. The Contractor is responsible for the layout of the works and he is also responsible for the levels, alignments and dimensions of the works executed according to the indications of the site plan and the ground plan.

In the event of a setting out or levelling error, the Contractor will be required to carry out at his own expense and regardless of their importance all the work necessary to restore the structures to their planned position.

The Company will make all the readings it deems necessary and will remain responsible for the consequences of any measurement error, regardless of the origin of the plan and calculations.

### **3.4.4- Brush clearing and pruning**

The land clearing will be done on the site of the building and on a 10 m right-of-way all around it. This work includes all subjection of tree felling and stump removal.

Brush clearing and pruning concern the immediate surroundings of the structure in order to improve the sunshine and provide visibility.

Regarding pruning, all branches overhanging the platform will be cut along a vertical line passing through the brush limit.

With regard to brush clearing, it consists of cutting low to the ground, without uprooting the vegetation and quality trees will be preserved and protected.

## **3.5- Earthworks**

### **3.5.1- Excavations**

In order to ensure a good stability of the building, foundation trenches shall be deep enough to meet soil of good bearing capacity. At all points of the foundation, the depth of trenches should not be less than 80cm. The base of the excavated trenches will be compacted to give a firm base to receive the lean concrete. No excavation of the trenches should be done until the Control Engineer has accepted the setting out of the building. Equally no elevation of the foundation should be done until the control Engineer has accepted the excavation of trenches.

## **BACKFILLING**

The soil excavated from the trenches may be used in backfilling provided it is of good quality. If not, selected or well graded soil (lateritic soil) from a borrow pit should be used for the purpose. The backfilling will be done in compacted layers of 15cm thick each. Any rejected soil should be discarded away from the vicinity of the structure

## **3.6- Foundations**

### **3.6.1- Lean concrete**

Lean concrete dosed at 200 kg/m<sup>3</sup> of 5 cm thick will be spread on the excavation bases.

### **3.6.2- concrete footing**

These will be isolated footings in reinforced concrete:

- Dosage: The concrete will be dosed at 350 kg/m<sup>3</sup>.



- Reinforcement: It will be with Ø10 rods with stirrups spaced at 15cm c/c.
- Dimensions: (40 x 40 x 30) cm for isolated pillars of 15 x 25cm and wall pillars of 15cm x 20cm.

### **3.6.3- Foundation walls**

The foundation walls shall be of block works of (20x20x40)cm erected using cement mortar dosed at 350kg/m<sup>3</sup>

### **3.6.4- Foundation beams and column footings**

- ❖ Dosage 350kg/m<sup>3</sup>
- ❖ Rods: Ø6 rectangular stirrups at every 16cm + 4 Ø10 longitudinal rods.

## **3.7- Masonry – Elevation**

### **WALLS**

The supporting walls shall be of sand screed block work with 15x20x40 hollow blocks duly laid in stretcher bond with cement mortar. The molding of 28 blocks per bag of cement is recommended for reasonable resistance.

Note: The partition walls should be sand screed block work with 15x20x40 hollow blocks.

### **V-ii PILLARS**

These shall be in reinforced concrete of with respective sizes as on the plans, Dosed at 350kg/m<sup>3</sup>.

Reinforcement:

All the reinforcements for the pillars shall be of Dia 10mm for longitudinal bars and Dia 6mm for stirrups. The stirrups shall be spaced at 20cm c/c. a 2.5cm concrete cover shall be provided.

### **V-iii – LINTELS**

The lintels shall be of reinforced concrete, dosed at 350kg/m<sup>3</sup>, measuring

### **V-iv -BEAMS**

#### **• WALL PLATE (RING BEAMS)**

They will be in reinforced concrete of 15cm x 20cm

- Dosage: 350 kg/m<sup>3</sup>
- Reinforcement: Ø6 stirrups rods at every 20cm + 4Ø10 longitudinal rods

### **3.7.3- Interior and exterior plasters**

On all masonry or concrete parts, a cement plaster of 2.5cm thick with cement mortar 1:3 mixed will be applied.

### **3.7.4- Smooth floor screed**

. The floors shall be of cement/ sand screed mortar, placed on a layer of mass concrete, dosed at 400kg/m<sup>3</sup>. The screed shall be of thickness 4cm and duly trowel finished for the entire floor area.

### **3.8- Roof - Frames**

#### **3.8.1- Treated wood frame**

##### **a) – Roof trusses**

The trusses will be executed with hardwood of 3x15cm, treated. These trusses will be solidly anchored in the masonry with the help of the retaining bars of the columns and wall plate.

##### **b)- purlins**

These are hardwood purlins of 5cmx8cm duly treated and fixed on the trusses to receive the roofing sheets.

#### **3.8.2- Fascia board**

The fascia board used will be 30 cm wide and 03 mm thick. It will be made of hard wood and planed on one side and will receive an aluminium coating (hemmed strip).

Sprocket: 4x8 batten connecting purlins.

#### **3.8.4- The Roof Cover**

The roofing will be made of sheets or corrugated sheets in Aluminium 3.5/10<sup>th</sup> fixed on the purlins twisted nails. The ridge will be raised and covered with 50 cm ridge sheets and the gables will receive aluminium edges.

#### **3.8.5- Ceiling**

##### **a) – Joist**

All ceiling joists shall be hardwood of 5cm x 8cm with molded ceiling battens. They shall be treated.

##### **Ceiling board**

This is done with 4mm thick ceiling boards of 60cm x 120cm, duly fixed on ceiling joists and the joints at the walls covered with battens as stated above. It shall be in block form.

N.B:a) **Eaves:** This shall be of smooth zinc sheets (tole list)

b) **Ventilation:** The ceiling shall be ventilated with holes of prefabricated elements at the gable ends and the dove

c) **Access to the ceiling:** Somewhere along the entire ceiling shall be provided with an access vent and covered.

### **3.9- Aluminium joinery**

Joinery shall consist of fitting of aluminums frames, glass/aluminum door/window shutters. The framed shutters will be fitted with glasses to provide for natural lighting. The activity of fitting of shutters and glasses shall be completed after painting has been completed.

### **3.10- Electrification**

For proper illumination of the structure, electrification will be done. Led lamps, with it control switches, installed at the suitable positions in the buildings. Sockets, circuit breakers, junction boxes, will be provided at appropriate locations. The entire circuit will be earthed. The 1.5mm<sup>2</sup>

H07V-U1000 cable will be used on lighting lines meanwhile 2.5mm<sup>2</sup> H07V-U1000 cable will be used on sockets and other outlets.

### **3.11- Painting**

The painting work will include all subject matter of ginning, sanding and filling with A priming coat of Lime Badugeon will be applied on the walls and ceiling of the buildings, to prepare the walls to receive the paints. Kelly Moore Premium external paints will be used at the exterior surfaces of the buildings meanwhile Pantex 800 will be used internally. National oil paint, shall be used atleast 1.5m from the floor, all round the building both internally and externally for skirting.

### **3.12- Plumbing – Sanitary**

All pipes in the evacuation network should be PVC and their accessories installed in such a manner as to ease maintenance and with suitable slopes provided. A separate drainage system will be adopted in this structure. Rain water from roofs, will be collected through aluminum rain water gutters and conveyed through diameter 125mm PVC pipes to 35cm X 40cm concrete rain water gutters all-round the structure, to a point of discharge away from the structure.

#### **3.13.1- tiling**

Verronic floor tiles will be laid on the walls and floors of all the toilets.

### **3.14- Drains and Various Networks**

Rectangular concrete gutters will be built round the building, with dimensions varying according to the buildings (10 cm thick).

A minimum slope of 2% will be made at the bottom of said gutters to facilitate the flow of water.

#### **a) - Safety of site personnel and users**

The safety measures for site personnel and users to be observed are those with tendencies to endanger the health of personnel working on the site as well as those of residents living near the site. Among the measures brief daily or weekly health and safety awareness meetings are called for, we can note the wearing of safety equipment by company personnel on the site, the limitation of dust and safety sign boards.

In order to avoid work accidents, the wearing of safety equipment such as gloves, helmets, nose covers is compulsory for anyone on the site. We are required to provide all these materials to the site in sufficient numbers and the site foreman is responsible for ensuring strict compliance with these safety measures.

Earthworks, in the presence of winds, are likely to cause the lifting of dust or other fine powders such as cement. In this case, despite wearing nose covers which is a protective measure, workers must water the soil surfaces during their work.

#### **b)- Garbage management;**

During work periods, the garbage produced by users must be placed in these bins. In addition, the Site foreman will organize weekly manual work sessions which will make it possible to recover all the garbage lying around in the yard. After the tanks have been filled, they should be emptied in a suitable place for sorting and in a 1.5 deep pit to be burned.

#### **d)- Water resources management**

The Contractor must avoid any conflict that may arise from the use of water resources. So, for these water needs; the quantities must be taken after consultation with the neighbouring populations. In any case, the company must avoid taking large quantities from seasonal sources, which could interrupt the satisfaction of the urgent water needs of the local populations.

In addition, he/she should avoid intervening in sensitive areas, introducing any forms of pollution that may result from washing or emptying vehicles and machinery.

#### **c) - Repair of damages caused to third parties**

It may happen that the company causes harm to an individual deliberately or accidentally (destruction of crops, habitat, etc.). This damage shall be remedied at the expense of the company and in a manner satisfactory to that third party. In return, the latter will have to issue a certificate of compensation, in order to avoid any other subsequent claim.

### **WORK EXECUTION PROGRAM**

#### **At the start of the construction site**

Within ten (10) days of the **Service Order** prescribing the start of work, the Contractor must provide:

- the organization chart of the site personnel management with the names and contacts, qualifications and functions of the various agents ;
- the detailed execution program for all the work, translated in the form of a graph (GANTT planning), in order to facilitate its updating and use.

This provisional program will include in particular all the information relating to:

- the site installations ;
- the arrangements made for the site supplies ;
- all construction work, with an indication of the personnel and equipment resources to be used;
- forecasts of any monthly work accounts.

He will specify :

- the provisions, methods and modes of execution that the Contractor proposes to adopt in order to execute the work (Method Statement of Works);
- the organization, resources and procedures over time and the phasing between works;
- The evolution of the workforce on site.

The Project Manager has five (5) days to comment on the programs submitted to him by the Contractor.

The actual start of work will be subject to the presentation of the detailed schedule to the Project Manager without the deadlines being thereby extended.

**In the course of works.**

In addition to the general work schedule established at the start of the work; the contractor must establish a monthly program as the work progresses.

The Contractor will make any changes to his program and his provisional schedule that may be prescribed by the Project Manager during site meetings.

The general schedule will be constantly updated if there is a discrepancy between the provisional schedule and the actual work progress schedule.

Document N° 5: **BILL OF QUANTITIES AND COSTS ESTIMATES**

\*\*\*\*\*

**BILL OF QUANTITIES AND COST ESTIMATES FOR THE REHABILITATION OF AN EXISTING MATERNITY BLOCK, RECONSTRUCTION OF A HEALTH CENTRE BLOCK AND EQUIPING OF CATHOLIC HEALTH CENTRE BINSHUA**

| <b>A</b>  |   |                |                   |                   |                   |
|---|---|----------------|-------------------|-------------------|-------------------|
| <b>REHABILITATION OF THE MARTENITY BLOCK SECTION CONTAINING; RECEPTION, NURSES STATION, MINOR THEATER, LABORATORY, CHANGING ROOM, DELIVERY ROOM, LABOUR ROOM, PRE-NATAL WARD, POST-NATAL WARD, WAITING AREA</b>   |   |                |                   |                   |                   |
| <b>LOT N°</b>   | <b>DESCRIPTION OF WORKS</b>   | <b>Unit</b>    | <b>Quantities</b> | <b>Unit Price</b> | <b>Total Cost</b> |
| <b>100</b>  | <b>REHABILITATION ON WALLS/MASONRY</b>                                |                |                   |                   |                   |
| 101   | 15cm X 20cm X 40cm block walls  | m <sup>2</sup> | 30                |                   |                   |
| 102   | Scraping and re-flooring (With smooth finishing)                      | m <sup>3</sup> | 5.3               |                   |                   |
| 103   | Scraping of Plaster and Re-plastering                                 | m <sup>2</sup> | 70                |                   |                   |
| <b>SUB TOTAL LOT 100</b>  |   |                |                   |                   |                   |
| <b>200</b>  | <b>REPAIRS ON FRAMEWORK AND ROOF COVERING</b>                         |                |                   |                   |                   |
| 201   | Replacement of rotten rafters   | ml             | 80                |                   |                   |
| 202   | Replacement of Purlins  | ml             | 115               |                   |                   |
| 203   | Installation of edge slates   | ml             | 216               |                   |                   |
| 204   | Replacement of bad roofing sheets                                     | m <sup>2</sup> | 35                |                   |                   |
| 205   | Installation of tole liese  | m <sup>2</sup> | 50.2              |                   |                   |
| 206   | Replacement of rotten ceiling   | m <sup>2</sup> | 65                |                   |                   |
| 207   | Installation of fscia boards  | ML             | 80                |                   |                   |
| <b>SUB TOTAL LOT 200</b>  |   |                |                   |                   |                   |
| <b>300</b>  | <b>RE-PAINTING</b>  |                |                   |                   |                   |
| 301   | Lime Badugeon or (more suitable to the environment)                   | m <sup>2</sup> | 304.3             |                   |                   |
| 302   | Exterior walls (Pantex 1300) or (more suitable to the environment)    | m <sup>2</sup> | 304.3             |                   |                   |
| 303   | Interior walls (Pantex 800) or (more suitable to the environment)     | m <sup>2</sup> | 304.3             |                   |                   |
| 304   | Metal carpentry (Glycero paint) or (more suitable to the environment) | m <sup>2</sup> | 55                |                   |                   |
| <b>SUB TOTAL LOT 300</b>  |   |                |                   |                   |                   |
| <b>SUB TOTAL A</b>  |   |                |                   |                   |                   |
| <b>B</b>  |   |                |                   |                   |                   |
| <b>RE-CONSTRUCTION OF A HEALTH CENTRE BLOCK CONSISTING OF; THEATER, PREPARATORY ROOM, CHANGING ROOM, CHILDRENS WARD, 6 PRIVATE WARDS, EMERGENCY ROOM, NURSES STATION, WOMEN'S WARD, MEN'S WARDS, LABORATORY, TWO DOCTOR'S OFFICES, RECEPTION ROOM, VITAL SIGNS ROOM, PHARMACY, OUT PATIENTS DEPARTMENT AND 22 TOILETS</b> |   |                |                   |                   |                   |
| <b>LOT N°</b>   | <b>DESCRIPTION OF WORKS</b>   | <b>Unit</b>    | <b>Quantities</b> | <b>Unit Price</b> | <b>Total Cost</b> |

| I - PRLIMINARY WORKS     |   |                |         |  |  |
|--------------------------|---|----------------|---------|--|--|
| <b>400</b>               | <b>PRELIMINARY WORKS</b>  |                |         |  |  |
| 401                      |   |                |         |  |  |
| 402                      | Site installation of Equipment and tools/Construction of site hut | LS             | 1       |  |  |
| 404                      | Implantation and setting out of structure                         | LS             | 1       |  |  |
| <b>SUB TOTAL LOT 400</b> |   |                |         |  |  |
| II - LARGE WORKS         |   |                |         |  |  |
| <b>500</b>               | <b>EARTH WORKS</b>  |                |         |  |  |
| 501                      | Site Clearance and removal of debris                              | m <sup>2</sup> | 2793    |  |  |
| 502                      | Excavation of Foundation Trenches                                 | ml             | 475.43  |  |  |
| 503                      | Excavation of Footings for pillars                                | m <sup>3</sup> | 20      |  |  |
| 504                      | Backfilling of Foundation with borrowed laterite                  | m <sup>3</sup> | 513.487 |  |  |
| <b>SUB TOTAL LOT 2</b>   |   |                |         |  |  |
| <b>600</b>               | <b>FOUNDATION WALL ERECTION</b>                                   |                |         |  |  |
| 601                      | Blinding Concrete   | m <sup>3</sup> | 12.249  |  |  |
| 602                      | RC for footings, dwaf columns, chaining beam                      | m <sup>3</sup> | 25.25   |  |  |
| 603                      | 20cm X 20cm X 40cm Masonry for foundation walls                   | m <sup>2</sup> | 329.96  |  |  |
| <b>SUB TOTAL LOT 600</b> |   |                |         |  |  |
| <b>700</b>               | <b>ELEVATION OF WALLS/MASONRY</b>                                 |                |         |  |  |
| 701                      | 15cm X 20cm X 40cm block walls                                    | m <sup>2</sup> | 1622.33 |  |  |
| 702                      | RC for pillars, Beams, and Lintels                                | m <sup>3</sup> | 38.416  |  |  |
| 703                      | 12cm thick Floor  | m <sup>3</sup> | 102.5   |  |  |
| 704                      | Scaffolding   | LS             | 1       |  |  |
| 705                      | Cement mortar plaster   | m <sup>2</sup> | 1662.33 |  |  |
| 706                      | Construction of access rams in RC to the Ground floors            | Unit           | 5       |  |  |
| <b>SUB TOTAL LOT 700</b> |   |                |         |  |  |
|                          |   |                |         |  |  |
| <b>800</b>               | <b>FRAMEWORK AND ROOF COVERING</b>                                |                |         |  |  |
| 801                      | Wooden king post trusses  | U              | 70      |  |  |
| 802                      | Purlins and edge slats  | ml             | 8655    |  |  |
| 803                      | Roofing sheets  | m <sup>2</sup> | 1347.51 |  |  |



|                           |  |                |         |  |  |
|---------------------------|--|----------------|---------|--|--|
| 804                       | Top ridging  | ML             | 102     |  |  |
| 805                       | Fascia Boards  | ML             | 156.57  |  |  |
| 806                       | Valley Gutters   | ML             | 36.16   |  |  |
| 807                       | Supply and installation of RW alu gutters  | ML             | 156.57  |  |  |
| 808                       | 4mm plywood ceiling  | m <sup>2</sup> | 1379.06 |  |  |
| 809                       | Supply and installation of ceiling linings   | ML             | 949.9   |  |  |
| <b>SUB TOTAL LOT 800</b>  |  |                |         |  |  |
| <b>TOTAL LARGE WORKS</b>  |  |                |         |  |  |
| <b>III - FINISHING</b>    |  |                |         |  |  |
| <b>900</b>                | <b>TILING (FINISHING)</b>  |                |         |  |  |
| 901                       | Supply and installation of tiles on Floors   | m <sup>2</sup> | 1379.06 |  |  |
| 902                       | Ceramic wall tiling of Toilets and baths   | m <sup>2</sup> | 290.4   |  |  |
| <b>SUB TOTAL LOT 900</b>  |  |                |         |  |  |
| <b>1000</b>               | <b>PAINTING</b>  |                |         |  |  |
| 1001                      | Lime Badugeon or (more suitable to the environment)  | m <sup>2</sup> | 3324.65 |  |  |
| 1002                      | Exterior walls (Pantex 1300) or (more suitable to the environment)                         | m <sup>2</sup> | 1662.33 |  |  |
| 1003                      | Interior walls (Pantex 800) or (more suitable to the environment)                          | m <sup>2</sup> | 1662.33 |  |  |
| 1004                      | Metal carpentry (Glycero paint) or (more suitable to the environment)                      | m <sup>2</sup> | 565     |  |  |
| <b>SUB TOTAL LOT 1000</b> |  |                |         |  |  |
| <b>1100</b>               | <b>JOINERY AND GLASSWORKS</b>  |                |         |  |  |
| 1101                      | Supply and installation of 0.9mx2.2m Aluminium doors including locks and all subjections   | u              | 19      |  |  |
| 1102                      | Supply and installation of 1.00mx2.2m Aluminium doors including locks and all subjections  | u              | 3       |  |  |
| 1103                      | Supply and installation of 2.00mx2.2m Aluminium doors including locks and all subjections  | u              | 1       |  |  |
| 1104                      | Supply and installation of 1.20mx2.2m Aluminium doors including locks and all subjections  | u              | 9       |  |  |
| 1105                      | Supply and installation of 0.7mx2.2m Aluminium doors including locks and all subjections   | u              | 22      |  |  |
| 1106                      | Supply and installation of 1.4mx1.2m Aluminium windows including locks and all subjections | u              | 56      |  |  |

|                           |  |           |       |  |  |
|---------------------------|--|-----------|-------|--|--|
| 1107                      | Supply and installation of 0.6mx0.6m Aluminium windows including locks and all subsections                       | u         | 22    |  |  |
| <b>SUB TOTAL LOT 1100</b> |  |           |       |  |  |
| <b>1200</b>               | <b>ELECTRICITY</b>   |           |       |  |  |
| 1201                      | Supply and installation of 4p 16A modular circuit breaker including all subsections                              | u         | 4     |  |  |
| 1202                      | Supply and installation of modular switch 16A including all subjects   | u         | 4     |  |  |
| 1203                      | Supply and installation of ceiling led lamps including all it subjects   | u         | 199   |  |  |
| 1204                      | Supply and installation Single switch 16A including all subsections  | u         | 34    |  |  |
| 1205                      | Supply and installation Two-way switch 16A including all subsections   | u         | 6     |  |  |
| 1206                      | Supply and installation of 2P+T10/16A socket outlets including all subsections                                   | u         | 128   |  |  |
| 1207                      | Supply and installation of 1.5mm <sup>2</sup> H07V-U1000 cable including all subsections                         | rlx(100m) | 32    |  |  |
| 1208                      | Supply and installation of 2.5mm <sup>2</sup> H07V-U1000 cable including all subsections                         | rlx(100m) | 25    |  |  |
| 1209                      | Supply and installation of built-in junction box 160x160 including all subsections                               | u         | 12    |  |  |
| 1210                      | Supply and installation of round recessed box including all subsections  | u         | 128   |  |  |
| 1211                      | Supply and installation of earth break bars including all subsections  | u         | 4     |  |  |
| 1212                      | Supply and installation of corrugated insulating sheath including all subsections                                | rlx(100m) | 15    |  |  |
| <b>SUB TOTAL LOT 1200</b> |  |           |       |  |  |
| <b>1300</b>               | <b>SANITARY PLUMBING</b>   |           |       |  |  |
| 1301                      | Rainwater Run off gutters of 35x40   | ml        | 266.4 |  |  |
| 1302                      | Supply and installation of RW evacuation pipes of 125mm for rainwater including all subsections                  | ml        | 266.4 |  |  |
| 1303                      | Construction of waste water treatment and disposal plant with all it subsections (Septic Tank and Soakaway pits) | LS        | 4     |  |  |

|                                       |  |    |    |  |  |
|---------------------------------------|--|----|----|--|--|
| 1304                                  | Supply and installation of waste water evacuation pipes (Foul water line 192ml, Scum water line 192ml and labour plumbing) | LS | 1  |  |  |
| 1305                                  | Supply and installation of WC with low flush tanks   | u  | 22 |  |  |
| 1306                                  | Supply and installation of hand basins + Mirrors   | u  | 37 |  |  |
| 1307                                  | Supply and installation of internal Water supply pipes with fittings and accessories                                       | LS | 1  |  |  |
| <b>SUB TOTAL LOT 1300</b>             |  |    |    |  |  |
| <b>TOTAL FINISHING WORKS</b>          |  |    |    |  |  |
| <b>SUB TOTAL RECONSTRUCTION WORKS</b> |  |    |    |  |  |
| <b>GRAND TOTAL</b>                    |  |    |    |  |  |

**BILL OF QUANTITIES AND COST ESTIMATES FOR THE REHABILITATION OF TWO ACOMMODATING FACILITIES IN ST JEROME'S BIBLICAL AND PASTORAL CENTRE KUMBO**

| N°                       | DESCRIPTION OF WORKS   | Unit | Quantities | Unit Price | Total Cost |
|--------------------------|--|------|------------|------------|------------|
| <b>100</b>               | <b>SITE INSTALLATION AND PRELIMINARY WORKS</b>                     |      |            |            |            |
| 101                      |  |      |            |            |            |
| 102                      | Site installation of Equipment and tools                           | LS   | 1          |            |            |
| <b>SUB TOTAL LOT 100</b> |  |      |            |            |            |
| <b>200</b>               | <b>REPAIRS AND REHABILITATIONS ON HOLY ANGELS BLOCK</b>            |      |            |            |            |
| 201                      | Supply and installation of roofing sheets (Pure aluminium 035/100) | m2   | 893        |            |            |
| 202                      | Trusses including; tie beams, struts, braces and rafters           | U    | 65         |            |            |
| 203                      | Supply and installation of purlines                                | U    | 384        |            |            |
| 204                      | Supply and installations of fascia boards and all it subjections   | ML   | 148.18     |            |            |
| 205                      | Supply and installations of tole lease                             | MI   | 148.2      |            |            |
| 206                      | Supply and installation of rain water aluminium gutters            | MI   | 148.2      |            |            |
| 207                      | Supply and installation of ceiling boards                          | m2   | 492        |            |            |
| 208                      | Roof demolition  | LS   | 1          |            |            |
| 210                      | Floor tilling  | m2   | 625.13     |            |            |

|                          |  |    |        |  |  |
|--------------------------|--|----|--------|--|--|
| 211                      | Replacement of toilet pots   | U  | 28     |  |  |
| 212                      | Replacement of doors with Aluminium doors                          | U  | 28     |  |  |
| 213                      | Replacement of windows with all its subjections                    | U  | 28     |  |  |
| 214                      | Scraping of plaster and replastering                               | m2 | 732    |  |  |
| 215                      | Painting   | m2 | 732    |  |  |
| <b>SUB TOTAL LOT 200</b> |  |    |        |  |  |
| <b>300</b>               | <b>REPAIRS AND REHABILITATIONS ON BLOCK A</b>                      |    |        |  |  |
| 301                      | Supply and installation of roofing sheets (Pure aluminium 035/100) | m2 | 893    |  |  |
| 302                      | Trusses including; tie beams, struts, braces and rafters           | U  | 65     |  |  |
| 303                      | Supply and installation of purlines                                | U  | 364    |  |  |
| 304                      | Supply and installations of fascia boards and all it subjections   | ML | 148.18 |  |  |
| 305                      | Supply and installations of tole lease                             | MI | 148.2  |  |  |
| 306                      | Supply and installation of rain water aluminium gutters            | MI | 148.2  |  |  |
| 307                      | Supply and installation of ceiling boards                          | m2 | 492    |  |  |
| 308                      | Roof demolition  | LS | 1      |  |  |
| 309                      | Floor tilling  | m2 | 586.13 |  |  |
| 310                      | Replacement of toilet pots   | U  | 28     |  |  |
| 311                      | Replacement of Hand basins   | U  | 9      |  |  |
| 312                      | Replacement of Showers   | U  | 9      |  |  |
| 313                      | Replacement of doors with Aluminium doors                          | U  | 26     |  |  |
| 314                      | Replacement of windows with all its subjections                    | U  | 26     |  |  |
| 315                      | Scraping of plaster and replastering                               | m2 | 732    |  |  |
| 316                      | Painting   | m2 | 732    |  |  |
| <b>SUB TOTAL LOT 600</b> |  |    |        |  |  |
| <b>400</b>               | <b>EXTENSION OF ST ALOYSIUS WATER SUPPLY TO PASTORAL CENTRE</b>    |    |        |  |  |
| 401                      | Supply and installation of PVC Pressure pipes NP10 Dia. 40mm       | MI | 2753   |  |  |
| 402                      | Supply and installation of PVC Pressure pipes NP16 dia. 40mm       | MI | 681    |  |  |
| 403                      | Pipeline excavation  | MI | 3434   |  |  |
| 404                      | Construction of flush out Chamber                                  | U  | 3      |  |  |
| 405                      | Construction of air release Chamber                                | U  | 3      |  |  |
| 406                      | Construction of control valve chamber                              | U  | 2      |  |  |

|                          |  |    |      |  |  |
|--------------------------|--|----|------|--|--|
| 407                      | Stream Crossings                                 | U  | 1    |  |  |
| 408                      | Fittings and Accessories                         | LS | 1    |  |  |
| <b>SUB TOTAL LOT 400</b> |  |    |      |  |  |
| <b>500</b>               | <b>REPAIRS ON CIRCULATION PATHS AND DRAINAGE</b> |    |      |  |  |
| 501                      | 15cm thick concrete flooring on stone hardcore   | m3 | 67.5 |  |  |
| 502                      | Cement paste smooth finishing                    | m2 | 450  |  |  |
| 503                      | 50cm x 25cm Concrete drainage gutters            | m  | 275  |  |  |
| <b>SUB TOTAL LOT 500</b> |  |    |      |  |  |
| <b>GRAND TOTAL</b>       |  |    |      |  |  |

Document N<sup>o</sup>. 6: **MODEL FORMS**

SOCIAL WELFARE DEPARTMENT - CARITAS KUMBO,  
DIOCESE OF KUMBO,  
P.O. BOX 115, KUMBO,  
NORTH WEST REGION, CAMEROON

**DECLARATION OF THE INTENTION TO TENDER**

I, the undersigned, .....

Nationality .....

Function ..... In my capacity as General Manager of

.....  
hereby acknowledge receipt of the file for the Open National Invitation to tender,

N<sup>o</sup> ..... of .....

About the .....

.....  
.....

..... and hereby declare my intention to tender for the  
said project.

DONE AT ..... ON THE .....

THE GENERAL MANAGER

SOCIAL WELFARE DEPARTMENT - CARITAS KUMBO,  
DIOCESE OF KUMBO,  
P.O. BOX 115, KUMBO,  
NORTH WEST REGION, CAMEROON

**TENDER FORM**

To: THE COORDINATOR,  
CARITAS KUMBO

Dear Sir,

Having examined the bidding documents, the receipt of which is hereby duly acknowledged, I the undersigned offer to execute the,

---

---

---

In conformity with the said bidding documents for the sum of (total bid amount in words and figures)

---

---

---

I undertake, if my bid is accepted to execute the works within \_\_\_\_\_ months/days in accordance with the schedule specified in the methodology and planning of execution of works included in my tender.

I agree to abide by this bid for a period of ( ) days from the date fixed for bid opening as included in the instructions to bidders, and it shall remain binding upon me and be accepted at any time before the expiration of that period.

Until a formal cancellation is prepared and executed, this together with your written acceptance thereof and your notification of award shall constitute a binding agreement between us.

I understand that you are not bound to accept the lowest of any bid you may receive.

Dated this ----- day of -----

(Signature)

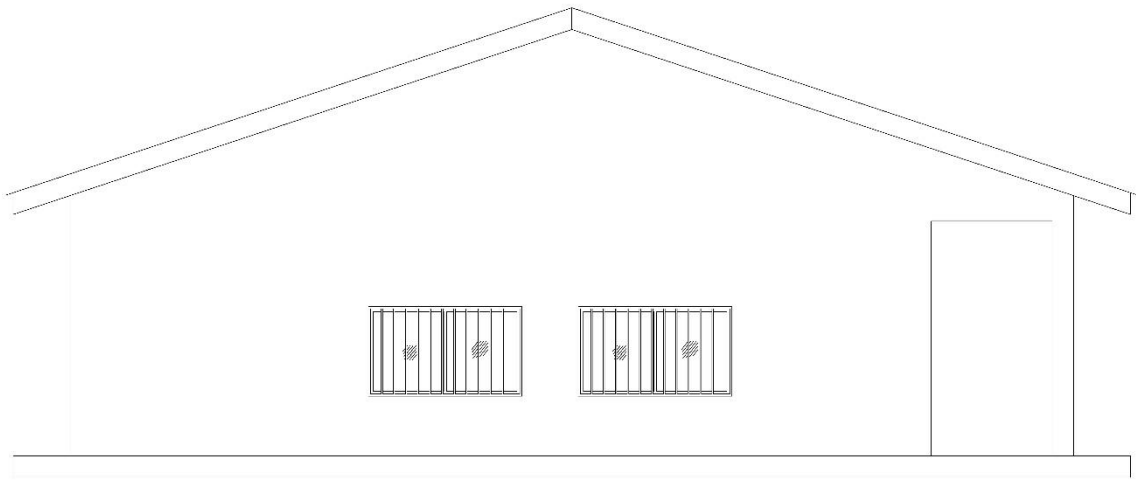
(In the capacity of)

Duly authorized to sign bids for and on behalf of -----

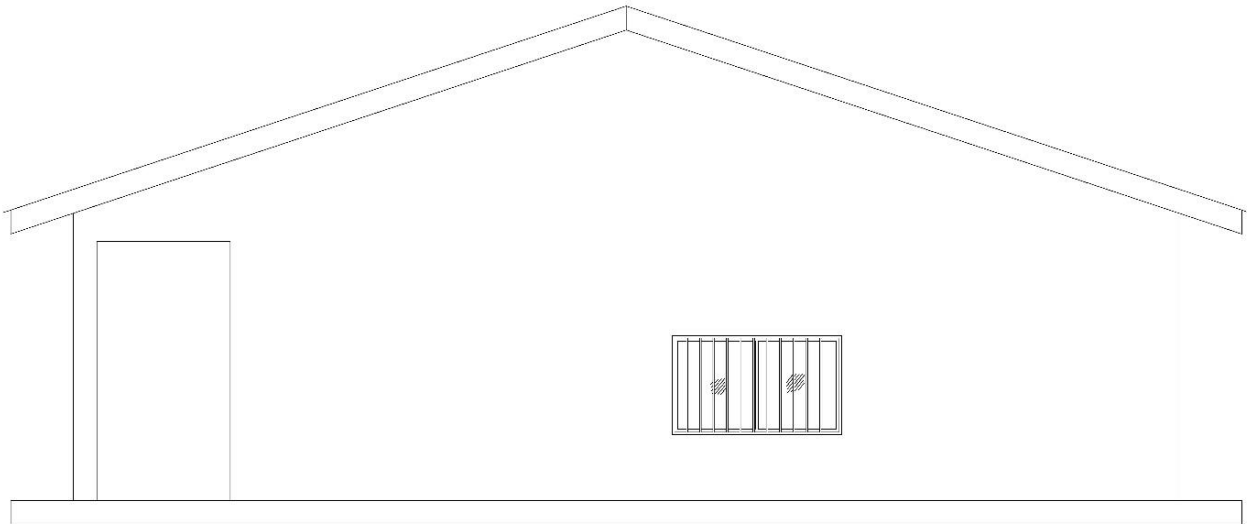


Document N<sup>o</sup>. 7: **PLANS OF STRUCTURES**  
\*\*\*\*\*

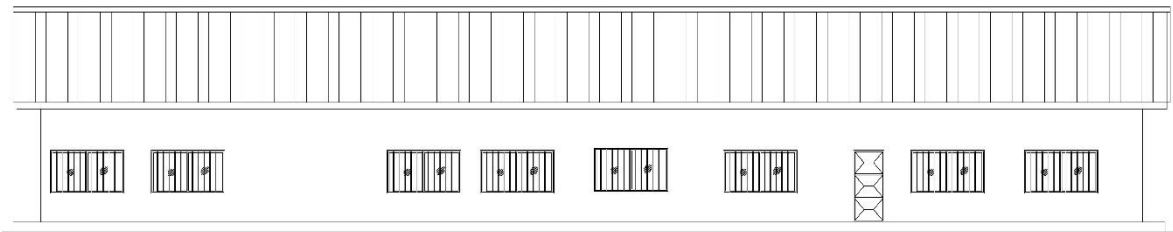




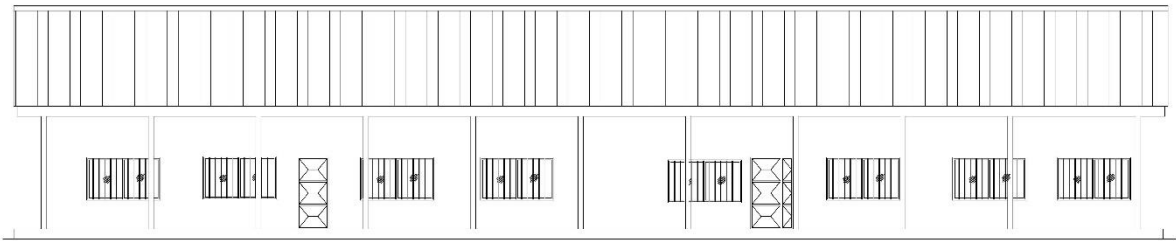
LEFT VIEW



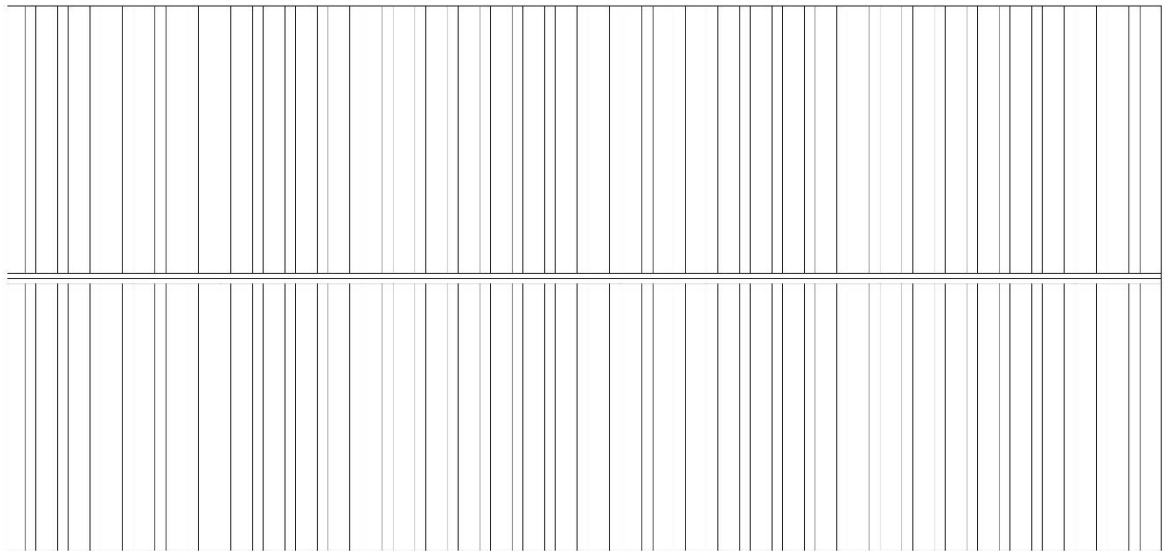
RIGHT VIEW



BACK VIEW

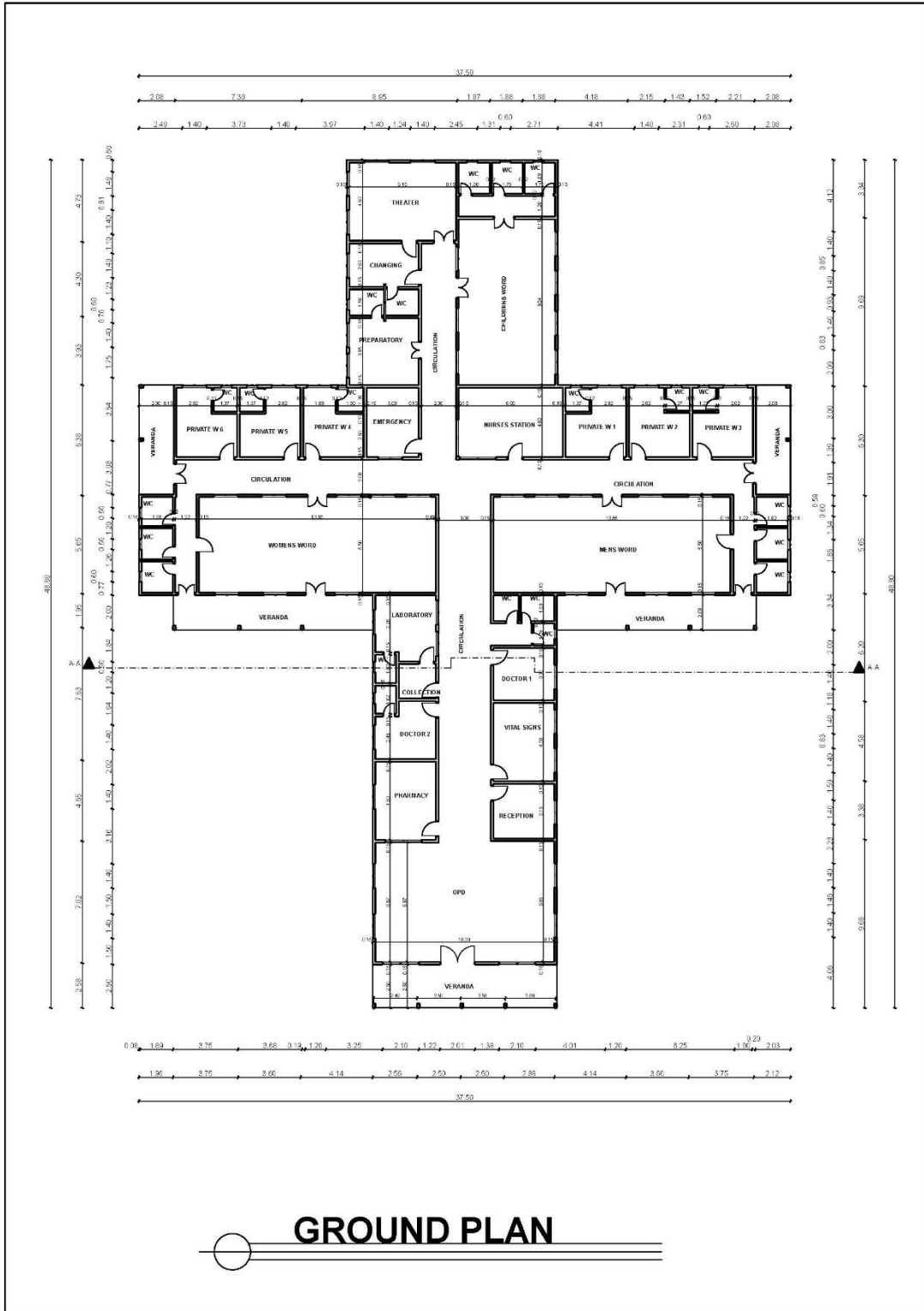


FRONT ELEVATION

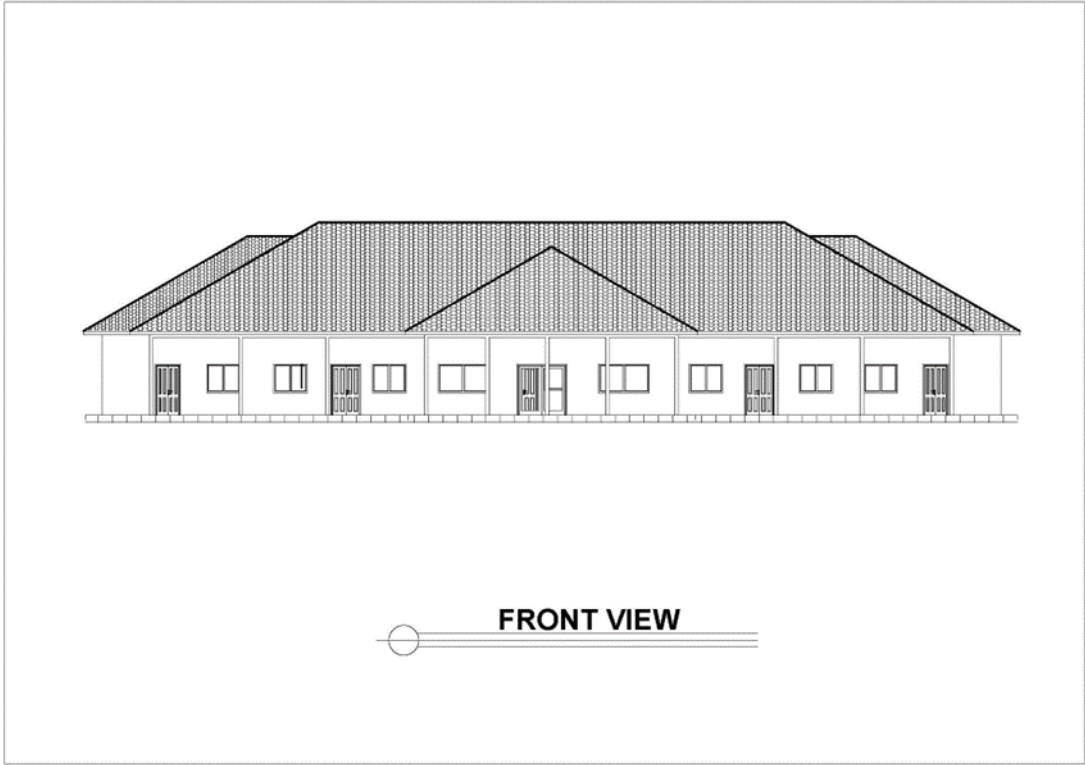
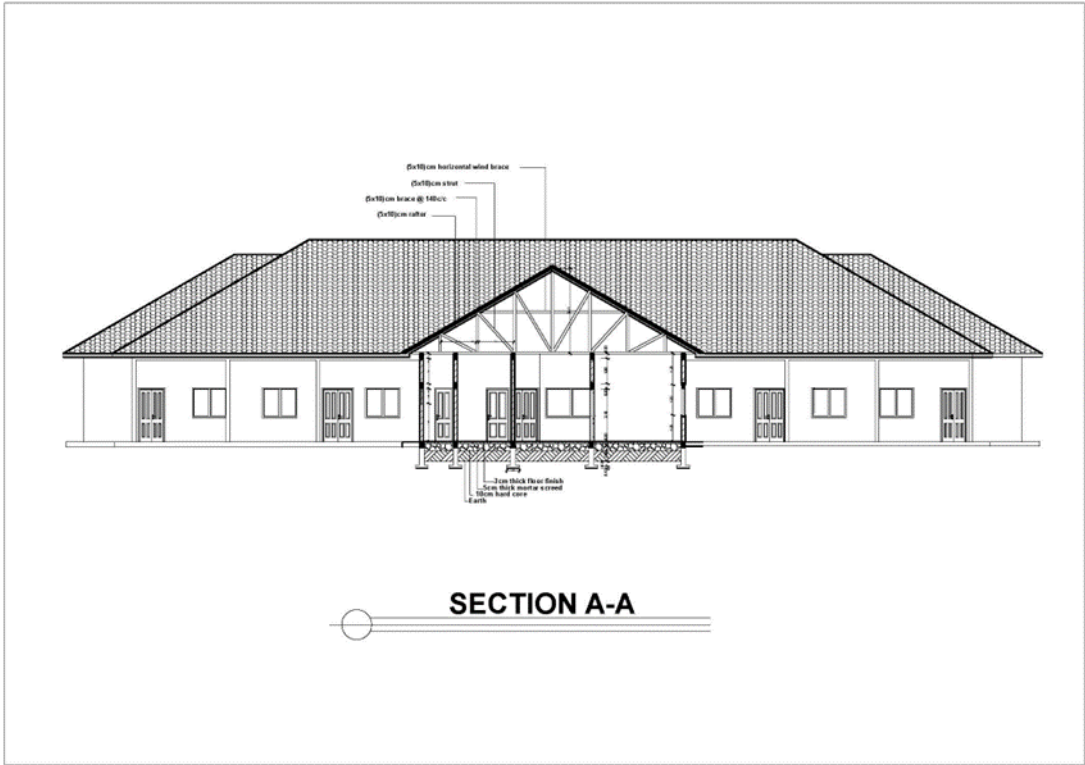


ROOF PLAN

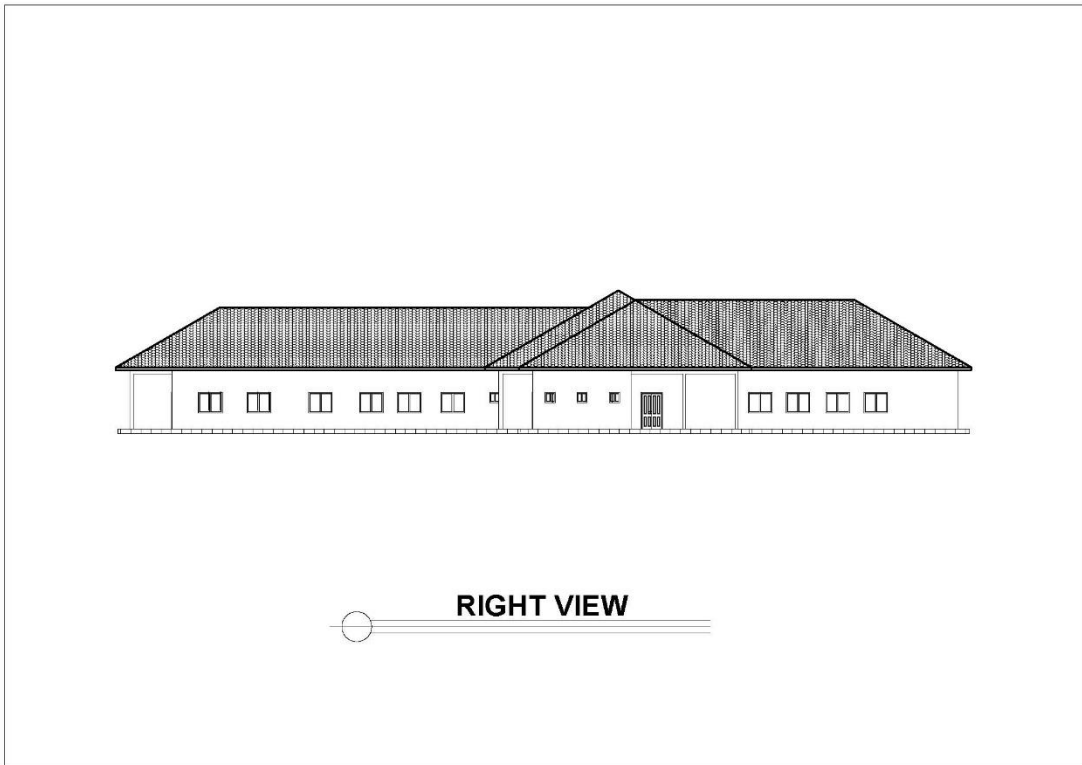
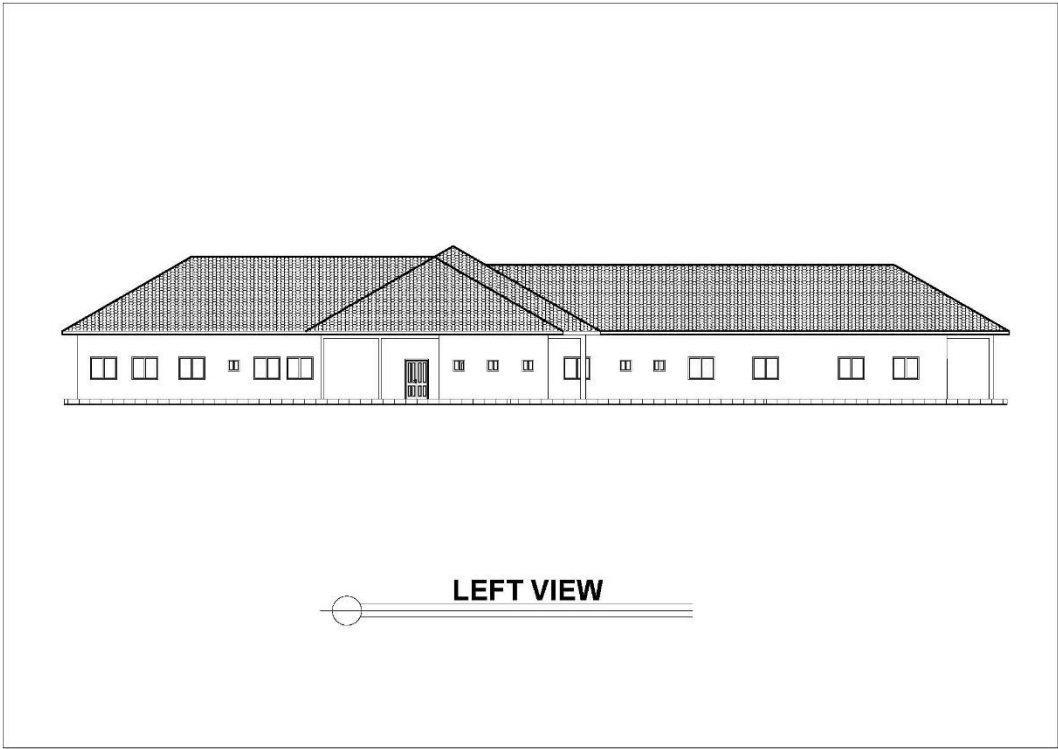
## **B) HEALTH CENTRE BLOCK TO BE RE-CONSTRUCTED**

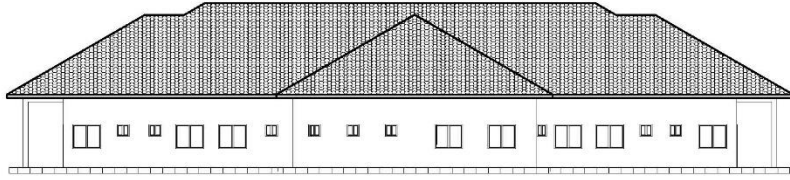


**GROUND PLAN**

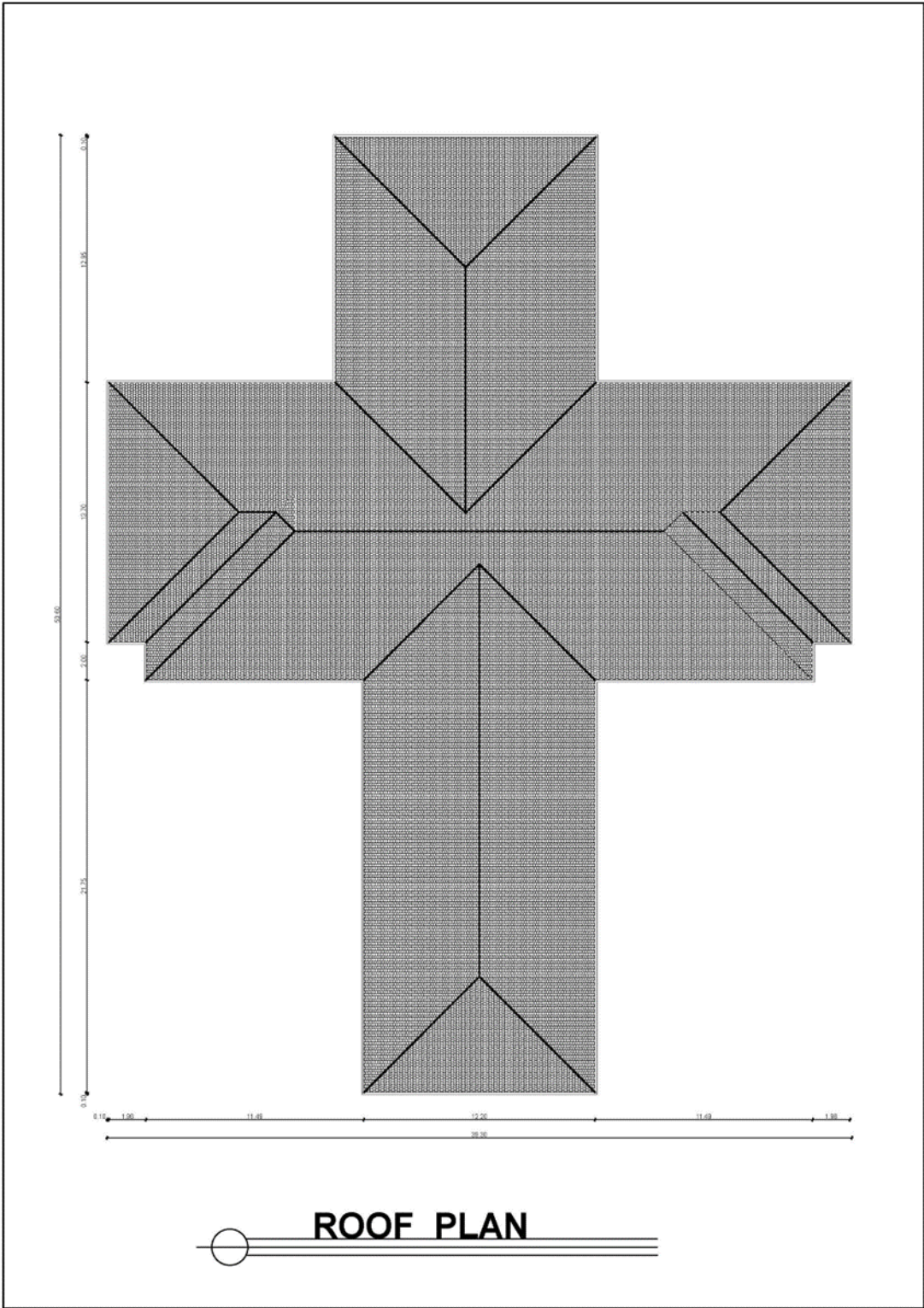




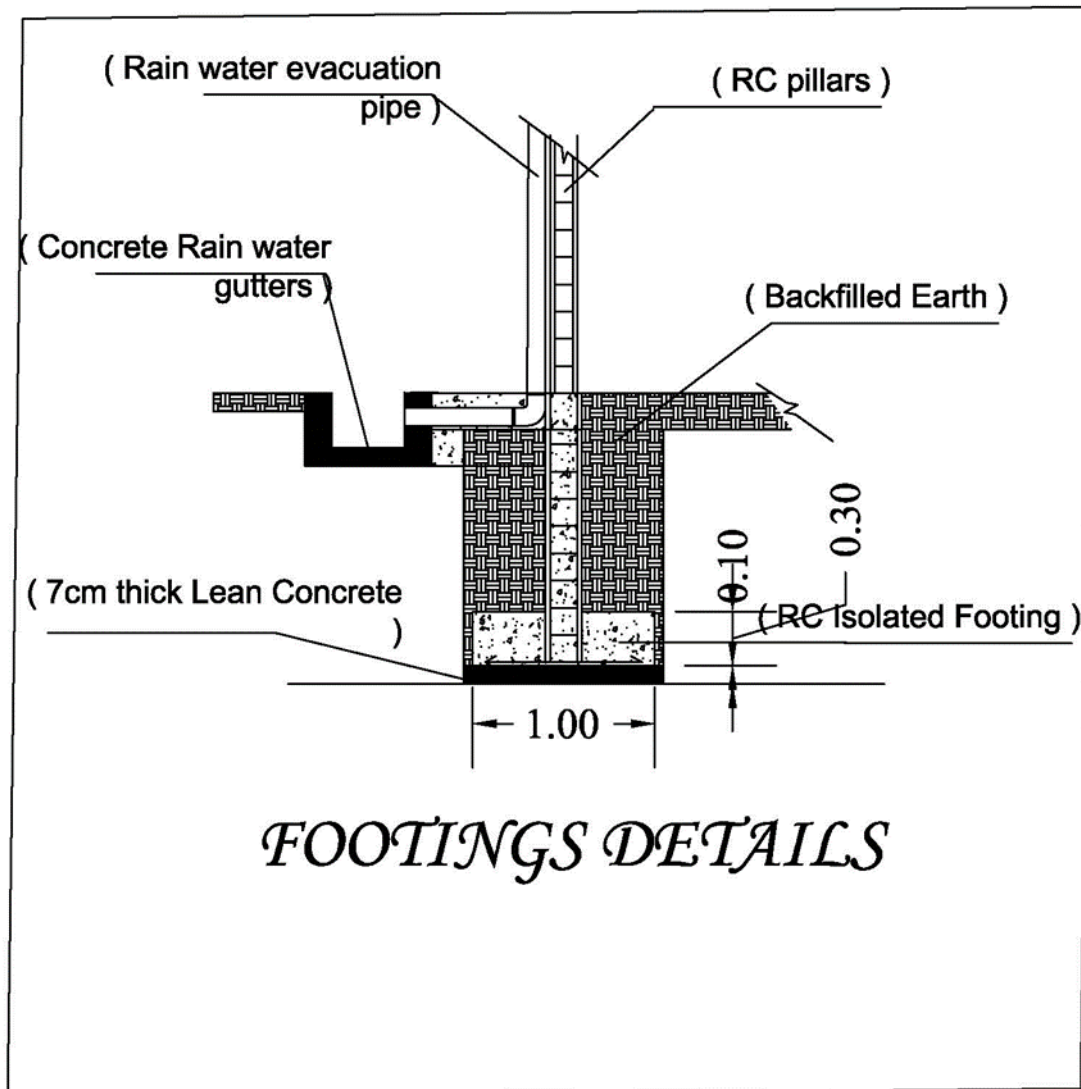




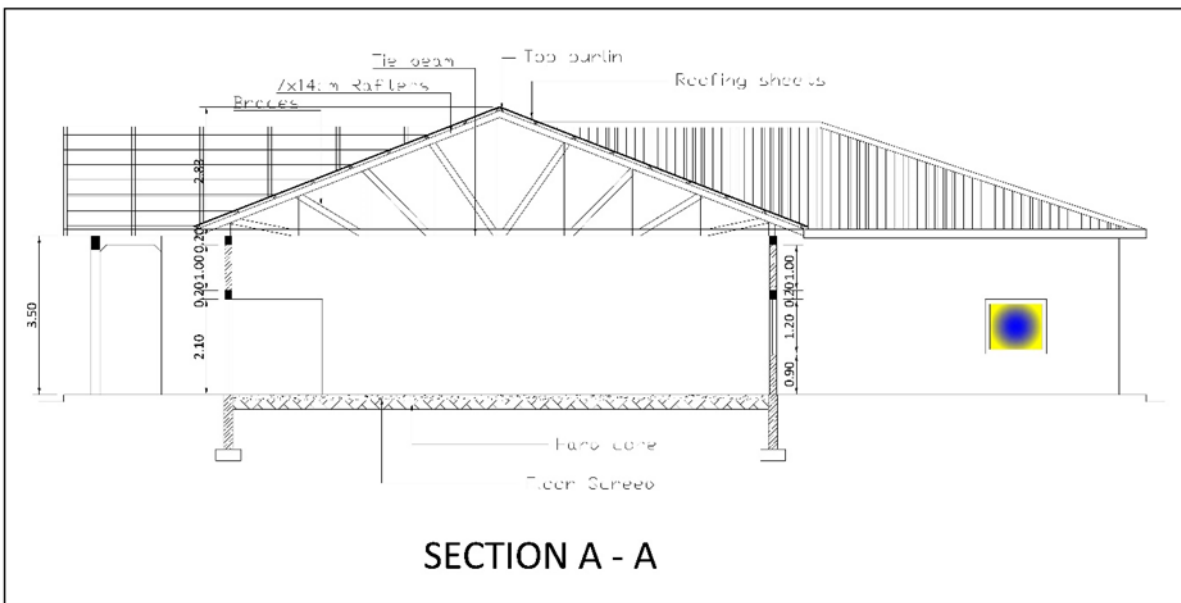
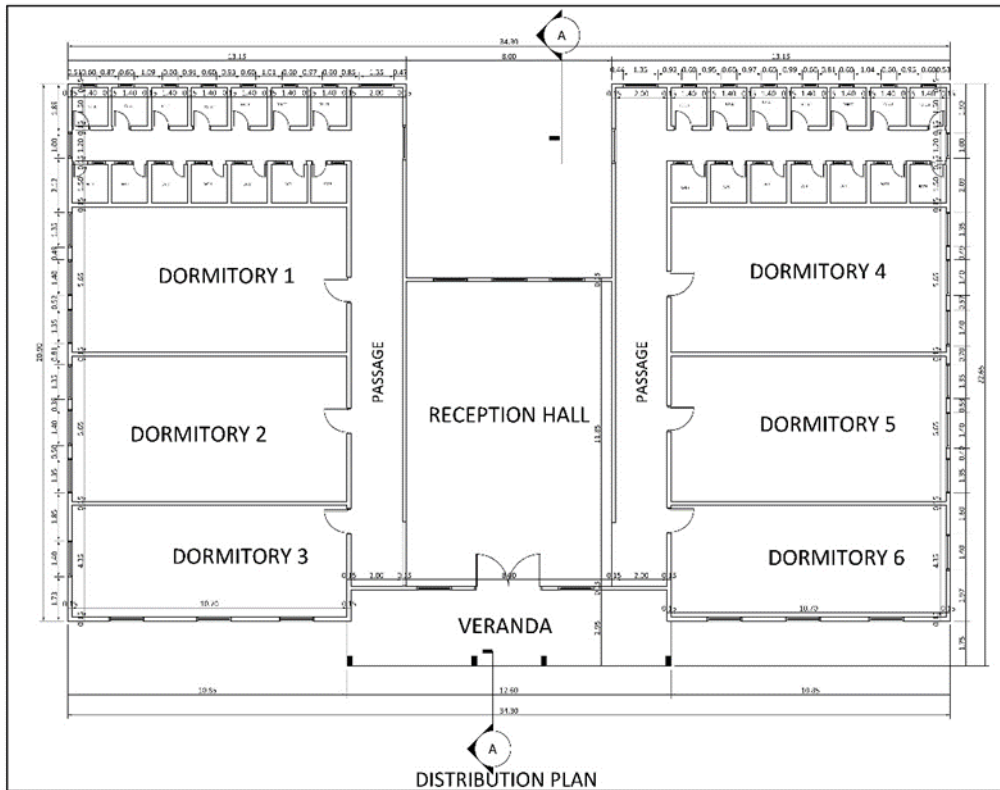
○ **BACK VIEW**

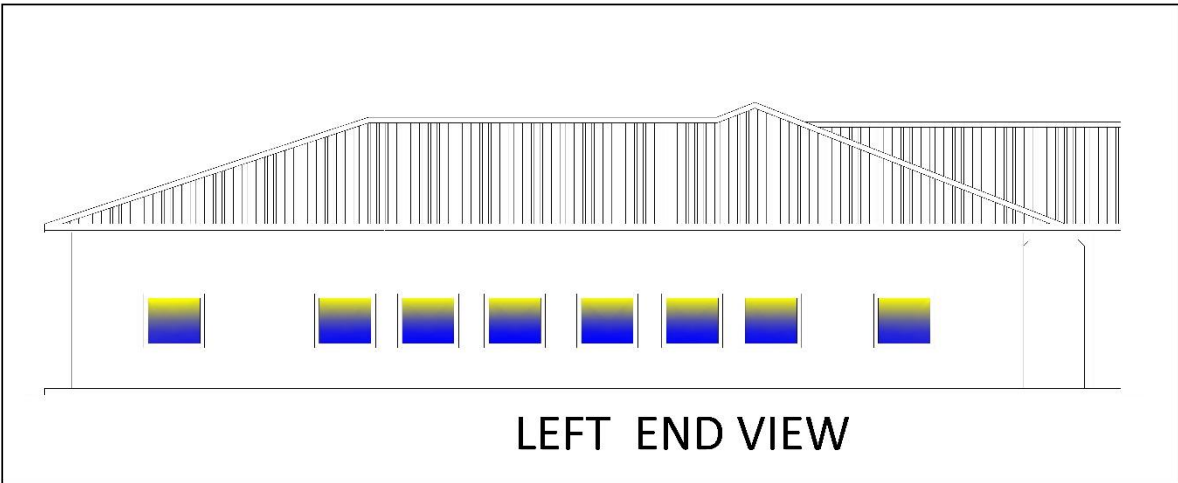
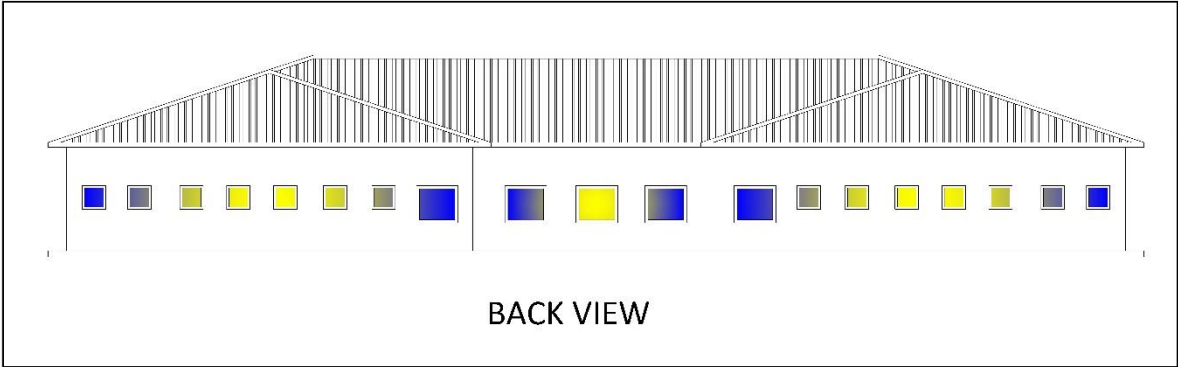


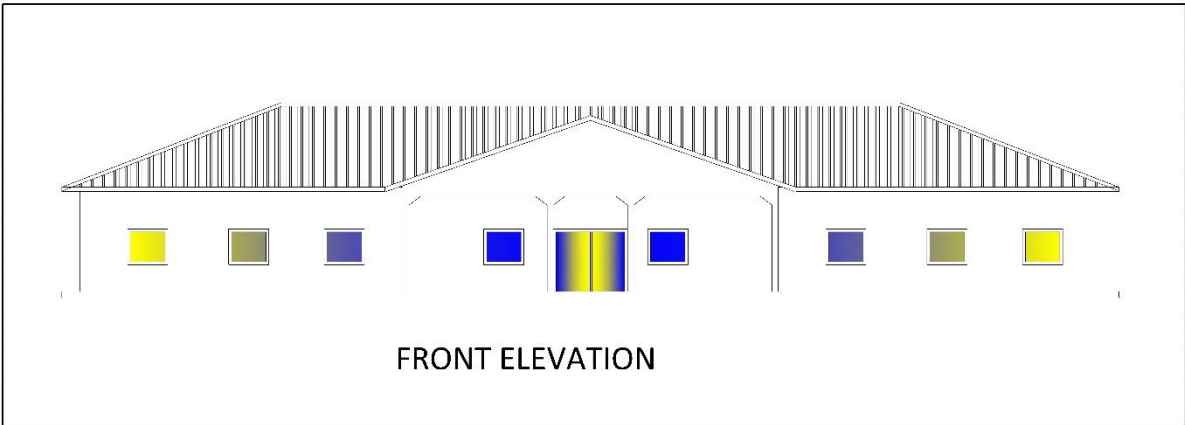
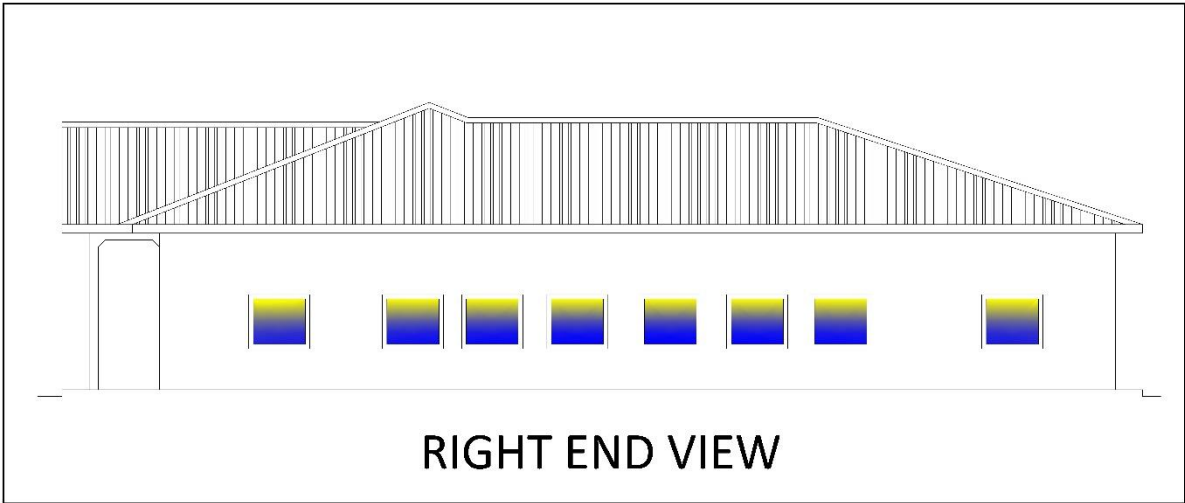
I

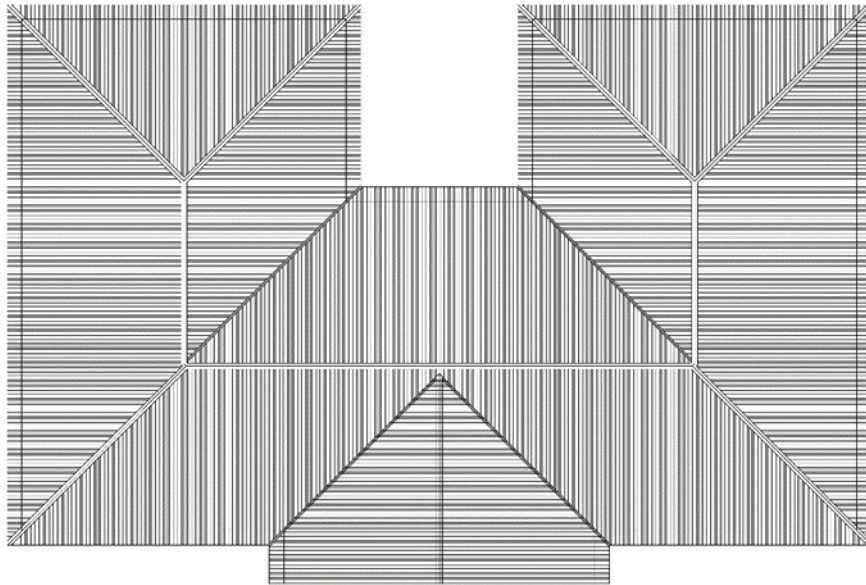


# C) BLOCK 1 PASTORAL CENTRE





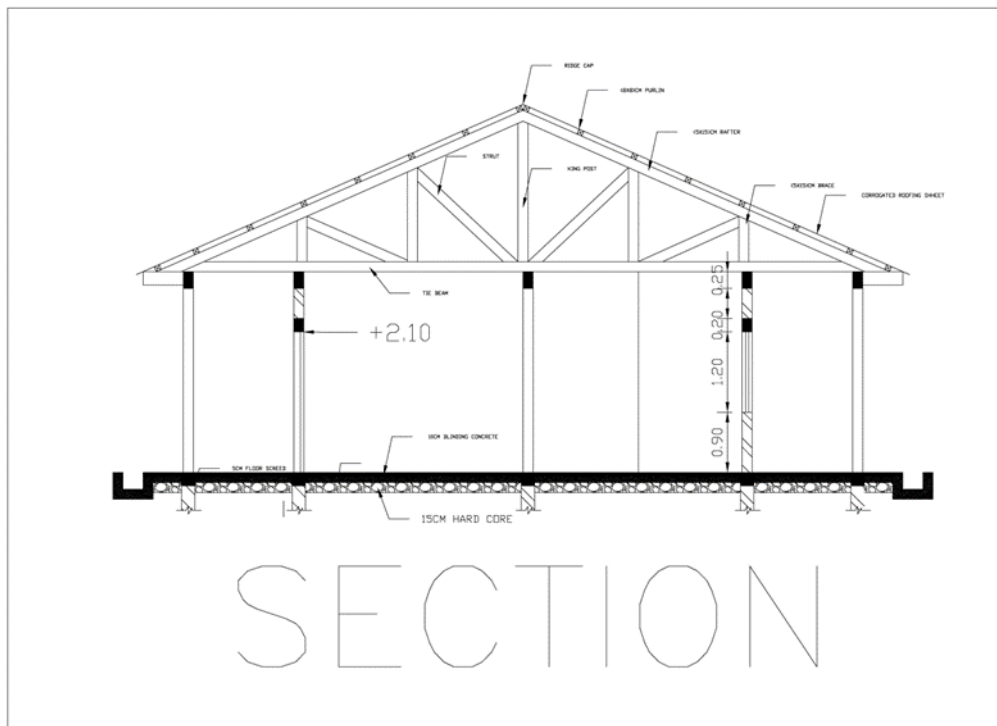
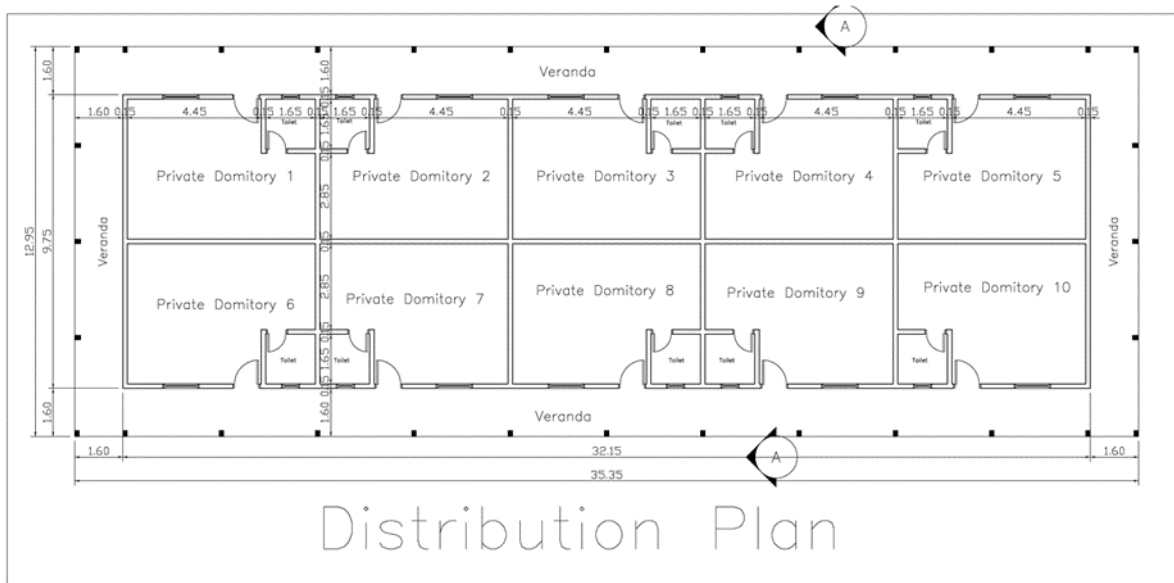


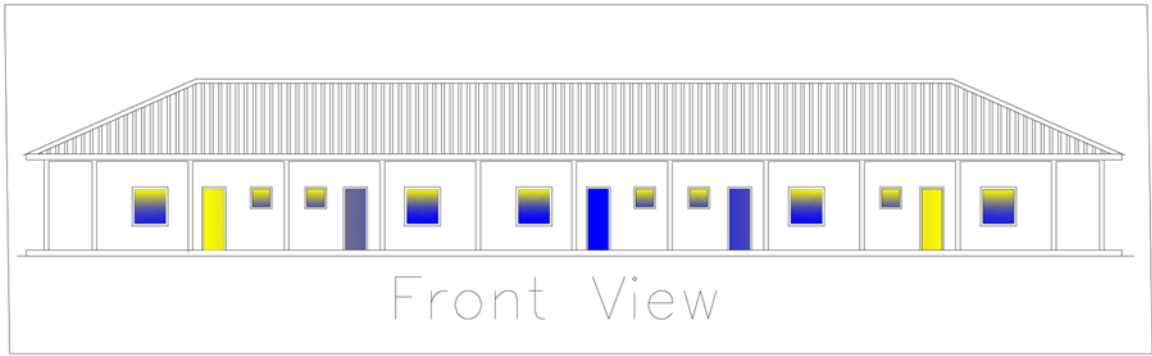


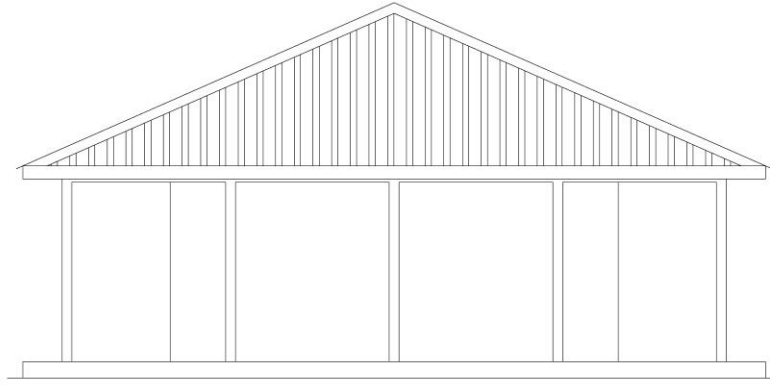
ROOF PLAN



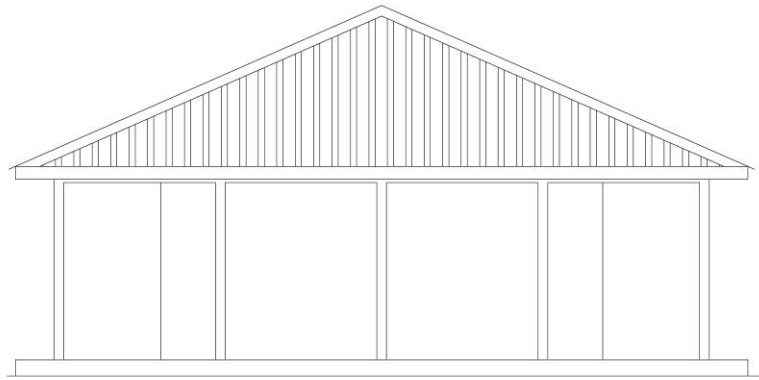
## D) PASTORAL CENTRE BLOCK 2







LEFT VIEW



RIGHT VIEW

